

A large-scale photograph of a mining operation. In the foreground, several yellow Caterpillar haul trucks are parked on a dirt road. The background shows a massive, terraced open-pit mine with distinct layers of rock and soil, set against a clear blue sky.

# Growing Precious Metals Producer in the Great Basin

**CORPORATE PRESENTATION – APRIL 2026**

TSX-V: ITR | NYSE: ITRG

[INTEGRARESOURCES.COM](http://INTEGRARESOURCES.COM)

# CAUTIONARY NOTE & DISCLAIMER

This presentation has been prepared by Integra Resources Corp. ("Integra" or the "Company") solely for the use in connection with the recipient's evaluation of the Company. This document is a presentation of information about the Company's activities as the date of the presentation and should be read in conjunction with all other disclosure documents of the Company. The information in this presentation is not intended to modify, qualify, supplement or amend information disclosed under corporate and securities legislation of any jurisdiction applicable to the Company. It is information in a summary form and does not purport to be complete and does not constitute an offer to sell or the solicitation of an offer to buy any security. It is not intended to be relied upon as advice to investors or potential investors and does not take into account the investment objectives, financial situation or needs of any particular investor. These should be considered, with or without professional advice, when deciding if an investment is appropriate. The information contained in this presentation is derived from estimates made by the Company, information that has been provided to the Company by other parties and otherwise publicly available information concerning the business and affairs of the Company and does not purport to be all-inclusive or to contain all the information that an investor may desire to have in evaluating whether or not to make an investment in the Company. In particular, information derived from third party sources has not been independently verified and is subject to material updating, revision and further amendment. No representation or warranty, express or implied, is made or given by or on behalf of the Company or any of its affiliates, or any of the directors, officers or employees of any such entities as to the accuracy, completeness or fairness of the information or opinions contained in this presentation and no responsibility or liability is accepted by any person for such information or opinions. In furnishing this presentation, the Company does not undertake or agree to any obligation to provide the recipients with access to any additional information or to update this presentation or to correct any inaccuracies in, or omissions from, this presentation that may become apparent. No person has been authorized to give any information or make any representations other than those contained in this presentation and, if given and/or made, such information or representations must not be relied upon as having been so authorized. The information and opinions contained in this presentation are provided as at the date of this presentation. The contents of this presentation are not to be construed as legal, financial or tax advice. Each prospective investor should contact his, her or its own legal adviser, independent financial adviser or tax adviser for legal, financial or tax advice. No securities commission or regulatory authority has reviewed the accuracy or adequacy of the information presented. This presentation is for informational purposes only and does not constitute an offer or a solicitation of an offer to purchase the securities referred to herein.

Certain information set forth in this presentation contains "forward-looking statements" and "forward-looking information" within the meaning of applicable Canadian securities legislation and in applicable United States securities law (referred to herein as forward-looking statements). Forward-looking statements are often identified by the use of words such as "may", "will", "could", "would", "anticipate", "believe", "expect", "intend", "potential", "estimate", "budget", "scheduled", "plans", "planned", "forecasts", "goals" and similar expressions. Except for statements of historical fact, certain information contained herein constitutes forward-looking statements which includes, but is not limited to, statements with respect to: the future financial or operating performance of the Company and its mineral properties; results from work performed to date; the estimation of mineral resources and reserves; the realization of mineral resource and reserve estimates; the development, operational and economic results of the Company's mineral properties and contents are related technical reports, including cash flows, revenue potential, development, expenditures, and timing thereof, extraction rates, life-of-mine projections and cost estimates; magnitude or quality of mineral deposits; anticipated advancement of the Company's mineral properties; exploration expenditures, costs and timing of the development of new deposits; costs and timing of future exploration; permitting; construction and optimization planning; estimates of metallurgical recovery rates and grades; requirements for additional capital; the future price of metals; government regulation of mining operations; environmental risks; the timing and possible outcome of pending regulatory matters; the realization of the expected economics of the Company's mineral properties; future growth potential of the Company; and future development plans.

Forward-looking statements are based on a number of factors and assumptions made by management and considered reasonable at the time such statement was made. Assumptions and factors include: the Company's ability to complete its planned exploration and development programs; the absence of adverse conditions at the Company's mineral properties; no unforeseen operational delays; no material delays in obtaining necessary permits; results of independent engineer technical reviews; the possibility of cost overruns and unanticipated costs and expenses; the price of gold and other metals remaining at levels that continue to render the Company's mineral properties economic; the Company's ability to continue raising necessary capital to finance operations; and the ability to realize on the mineral resource and reserve estimates. Forward-looking statements necessarily involve known and unknown risks and uncertainties, which may cause actual performance and financial results in future periods to differ materially from any projections of future performance or result expressed or implied by such forward-looking statements. These risks and uncertainties include, but are not limited to: general business, economic and competitive uncertainties; the actual results of current and future exploration activities; conclusions of economic evaluations; meeting various expected cost estimates; benefits of certain technology usage; changes in project parameters and/or economic assessments as plans continue to be refined; future prices of metals; possible variations of mineral grade or recovery rates; the risk that actual costs may exceed estimated costs; geological, mining and exploration technical problems; failure of plant, equipment or processes to operate as anticipated; accidents, labor disputes and other risks of the mining industry; delays in obtaining governmental approvals or financing; risks related to local communities; the speculative nature of mineral exploration and development (including the risks of obtaining necessary licenses, permits and approvals from government authorities); title to properties; and other factors beyond the Company's control and as well as those factors included herein and elsewhere in the Company's public disclosure. Although the Company has attempted to identify important factors that could cause actual actions, events or results to differ materially from those described in the forward-looking statements, there may be other factors that cause actions, events or results not to be as anticipated, estimated or intended. Readers are advised to study and consider risk factors disclosed in Integra's Annual Information Form dated March 24, 2026 for the fiscal year ended December 31, 2025, which is available on the SEDAR+ issuer profile for the Company at [www.sedarplus.ca](http://www.sedarplus.ca) and available as Exhibit 99.1 to Integra's Form 40-F, which is available on the EDGAR profile for the Company at [www.sec.gov](http://www.sec.gov).

Investors are cautioned not to put undue reliance on forward-looking statements. The forward-looking statements contained herein are made as of the date of this presentation and, accordingly, are subject to change after such date. The Company disclaims any intent or obligation to update publicly or otherwise revise any forward-looking statements or the foregoing list of assumptions or factors, whether as a result of new information, future events or otherwise, except in accordance with applicable securities laws. Investors are urged to read the Company's filings with Canadian securities regulatory agencies, which can be viewed online under the Company's profile on SEDAR+ at [www.sedarplus.ca](http://www.sedarplus.ca).

## Qualified Person

The scientific and technical information contained in this presentation has been reviewed and approved by James Frost, P.Eng., Director, Technical Services of Integra and Michael J. Murenbeeld AIPG CPG-12233, Integra's Manager Geology and Exploration, each is a qualified person as defined by National Instrument 43-101 – Standards of Disclosure for Mineral Projects ("NI 43-101").

## Technical Reports & News Releases

Certain scientific and technical information relating to the Company's mineral properties are based on and derived from the below noted technical reports prepared in accordance with NI 43-101 and applicable news releases. The information contained in this presentation related to the applicable mineral properties is subject to all of the assumptions, qualifications and procedures set out in each such report and as disclosed in such applicable news releases. Reference should be made to such reports, which have been filed (or will be filed in the case of the DeLamar Project), and applicable news releases, with the applicable regulatory authorities and are available under the Company's SEDAR+ and EDGAR profile at [www.sedarplus.ca](http://www.sedarplus.ca) and [www.sec.gov](http://www.sec.gov). The technical reports are meant to be read as a whole and sections should not read or relied upon out of context.

- Florida Canyon: "NI 43-101 Technical Report, Florida Canyon Gold Mine, Pershing County, Nevada, USA", dated July 11, 2024, with an effective date of June 28, 2024.
- DeLamar: "NI 43-101 Feasibility Study and Technical Report on the DeLamar Project, Owyhee County, Idaho, USA", dated February 2, 2026, with an effective date of December 8, 2025.
- Nevada North: "NI 43-101 Technical Report Preliminary Economic Assessment for the Wildcat and Mountain View Projects, Pershing and Washoe Counties, Nevada, United States of America", dated July 30, 2023, with an effective date of June 28, 2023.

## Cautionary Note for U.S. Investors Concerning Mineral Resources and Reserves

NI 43-101 is a rule of the Canadian Securities Administrators which establishes standards for all public disclosure an issuer makes of scientific and technical information concerning mineral projects. Technical disclosure contained in this presentation has been prepared in accordance with NI 43-101 and the Canadian Institute of Mining, Metallurgy and Petroleum Classification System. These standards differ from the requirements of the U.S. Securities and Exchange Commission ("SEC") and resource and reserve information contained in this presentation may not be comparable to similar information disclosed by domestic United States companies subject to the SEC's reporting and disclosure requirements.

All references to "\$" in this presentation are to U.S. dollars unless otherwise stated.

Florida Canyon Mine: **Nevada**



DeLamar Project: **Idaho**



Nevada North Project: **Nevada**



**A GROWING PRECIOUS METALS PRODUCER FOCUSED IN THE GREAT BASIN OF THE USA**



**Focused profitability & operational success at principal operating asset, the Florida Canyon Mine**



**Value creation through profitable mining operations, rapid project development, prudent capital allocation, and M&A**



**Rapidly advancing development stage projects: the DeLamar Project and the Nevada North Project**



**Management with deep experience in mining operations, project development, mineral exploration, and capital markets**

# 2025: Transition → 2026: Stability and De-Risking → 2027-2028: Growth

**Transition  
2025**

Successful Transition to Gold Producer, Guidance of +70,000 ozs gold achieved in 1<sup>st</sup> year, Record Cash Flows, Mine Plan of Operations Approved at DeLamar, TSX.V Top 50

Delamar Feasibility (NPV5%:\$1.9 B<sup>(1)</sup>), Exec Team Enhancements, Debt Retirement, Benefit Agreement w/ Tribal Nations (DeLamar), Treasury = \$63 M (EOY 2025)

**Stability  
2026**

Delamar Fast-41 BLM 15 month Permitting, DeLamar Pre-permitting Site Upgrades Commence, GDXJ Index Inclusion, Treasury = ~\$110 M (Q1 2026) <sup>(2)</sup>

50,000-meter drill program in Nevada and Idaho, NOI from the BLM (May), Permitting Public Scoping (June), Florida Canyon Updated FS and Reserve (June), Drill Results

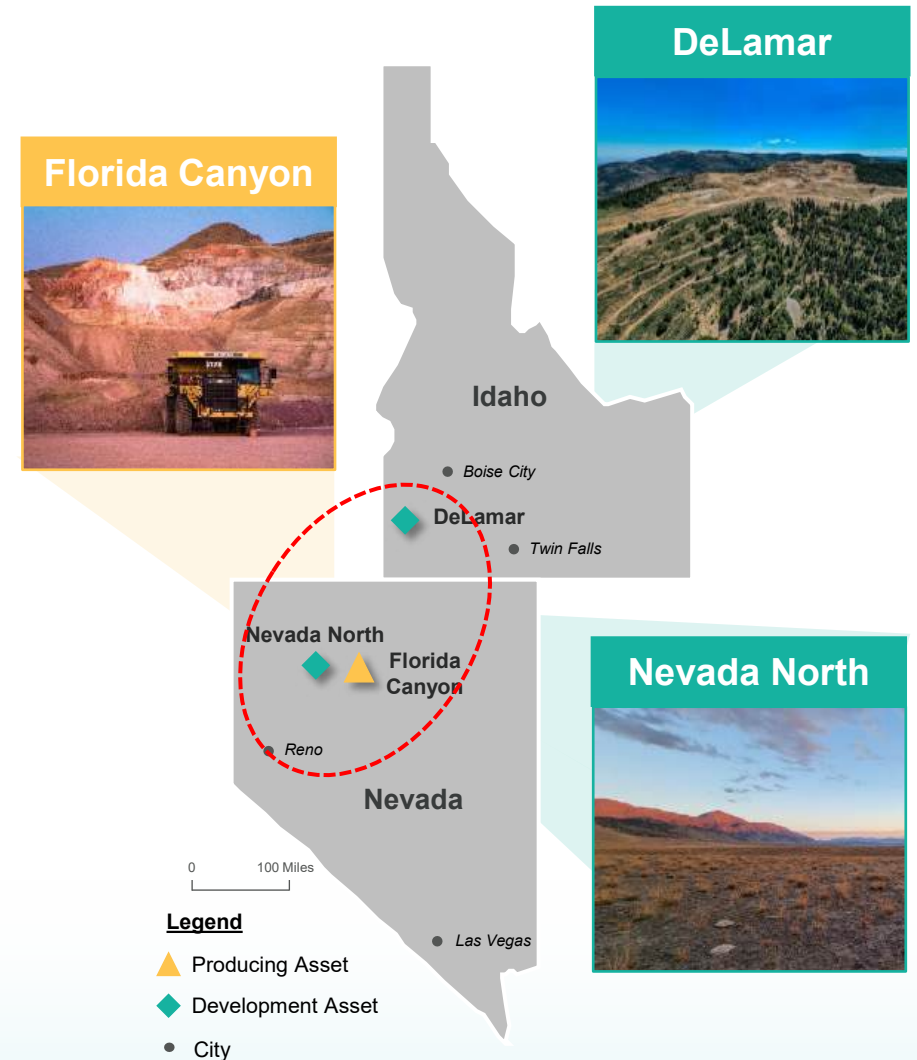
**Growth  
2027-2028**

Nevada North Pre-feasibility (Q2 2027), DeLamar Project Financing (2027), Record of Decision Permit (Q3 2027), 20% increase (80-90,000 ozs) in gold production at Florida

Construction starts at DeLamar Q3 2028, Nevada North Permitting Advances to Feasibility and final stages of permitting

# Production Today, Growth Tomorrow

<b>Production &amp; Cash Flow</b>	Florida Canyon generates cash flow to support the advancement of DeLamar & Nevada North
<b>Growth Pipeline</b>	Built-in pipeline of complementary heap leach projects underpin unmatched growth profile
<b>Resource Scale</b>	Peer leading resource inventory of 6.9Moz AuEq M&I and 3.1Moz AuEq Inf. <sup>1</sup> across three assets
<b>Jurisdiction</b>	Scarcity of high-quality assets in the Great Basin; opportune time for project advancement
<b>Team</b>	Bolstered executive team; support from large institutions, Wheaton, Alamos, and Beedie
<b>Attractive Valuation</b>	Unique value proposition driven by blend of production and advanced development projects



# Key People: Proven Track Record

Executive team with extensive experience in operations, project development, exploration and capital markets



**George Salamis**  
**President, CEO & Director**

- +30 years of experience
- Previously Executive Chair of Integra Gold which was acquired by Eldorado Gold in 2017 for C\$590M



**Clifford Lafleur**  
**Chief Operating Officer**

- +25 years of experience
- Previously with SilverCrest Metals; played key role in growth leading to US\$1.7B acquisition by Coeur Mining



**Andrée St-Germain**  
**Chief Financial Officer**

- +15 years of experience
- Previously CFO of Integra Gold which was acquired by Eldorado Gold in 2017 for C\$590M



**Sean Deissner**  
**VP, Finance**

- +15 years of experience
- Previously with SilverCrest Metals; played key role in growth leading to US\$1.7B acquisition by Coeur Mining



**Dale Kerner**  
**VP, Permitting**

- +25 years of experience
- Previously with Perpetua Resources; instrumental in Stibnite Project receiving Final Record of Decision



**Mark Stockton**  
**VP, External Affairs & Sustainability**

- +10 years of experience
- Previously held several roles with Integra Gold which was acquired by Eldorado Gold in 2017 for C\$590M



**Scott Olsen**  
**VP, Engineering - Processing & Infra.**




- +25 years of experience
- Seasoned metallurgical engineer; held senior roles at Bald Mountain Mine for Barrick and Kinross



**Scott Guay**  
**VP, Project Development**

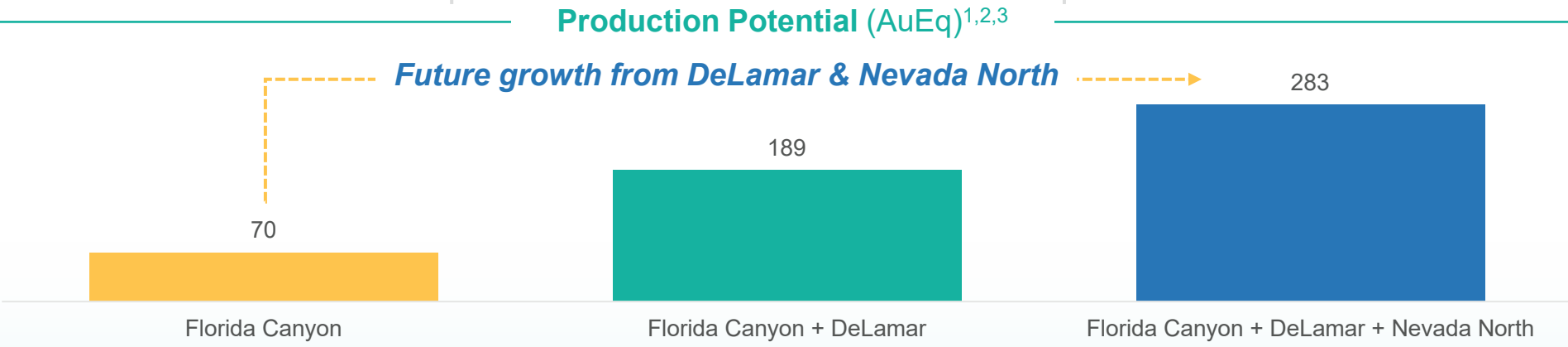
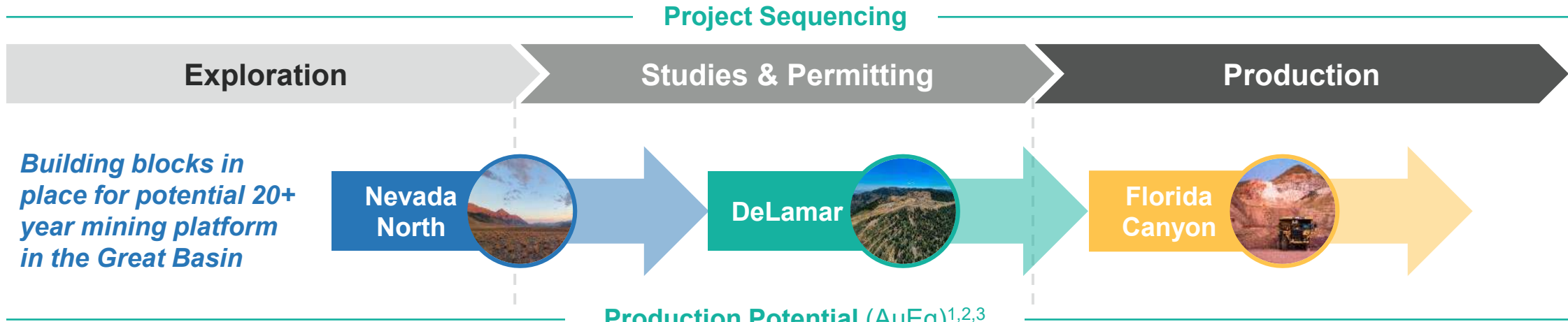
- +25 years of experience
- Previously with Kinross; held senior roles overseeing global mining projects and delivery of capital projects

# Key Assets: Complementary, High-Quality, Great Basin Focused

<p><b>Florida Canyon Mine (Nevada)<sup>1</sup></b></p>	<p><b>DeLamar Project (Idaho)<sup>1</sup></b></p>	<p><b>Nevada North Project (Nevada)<sup>1,2</sup></b></p>
		
<p><b>Production &amp; Cash Flow</b></p>	<p><b>Engineering &amp; Permitting</b></p>	<p><b>De-risking &amp; Growth</b></p>
<p><b>Status:</b> Acquired by Integra in 2024; currently producing heap leach gold mine</p> <p><b>Scale:</b> 2026 production guidance of 70-75koz Au; growth potential identified to 80-90koz Au in 2027, 2028 and beyond</p> <p><b>2026:</b> Continued cash flow and growth; updated technical report expected mid-year</p>	<p><b>Status:</b> 2025 Feasibility Study: current after-tax NPV5% of US\$1.9B, 97% IRR<sup>3</sup></p> <p><b>Scale:</b> 10-year LOM with avg. production of ~106koz AuEq (year 1-5 average of ~120koz) from oxide resource only</p> <p><b>2026:</b> Permitting timeline established with Record of Decision expected in Q3 2027</p>	<p><b>Status:</b> 2023 Preliminary Economic Study, recent exploration and technical drilling</p> <p><b>Scale:</b> 13-year LOM with avg. production of ~80koz AuEq; significant growth potential</p> <p><b>2026:</b> De-risking activities and exploration drilling in support 2027 Pre-feasibility Study and pre-permitting</p>

# Key Assets: Sequencing & Production Potential

Florida Canyon generates cash flow to fund project advancement and future growth from DeLamar and Nevada North



**We are already a producer with visible path to mid-tier – and funding it internally**

1. Refer to NI 43-101 technical report titled "Technical Report Florida Canyon Gold Mine, Pershing County, Nevada, USA", dated July 11, 2024, with an effective date of June 28, 2024, "NI 43-101 Feasibility Study and Technical Report on the DeLamar Project, Owyhee County, Idaho, USA", dated February 2, 2026, with an effective date of December 8, 2025, and NI 43-101 technical report titled: "Technical Report Preliminary Economic Assessment for the Wildcat & Mountain View Projects, Pershing and Washoe Counties, Nevada, USA", dated July 30, 2023, with an effective date of June 28, 2023, all available under Integra's SEDAR+ profile at [www.sedarplus.ca](http://www.sedarplus.ca) and EDGAR profile at <https://www.sec.gov>. 2. PEA is preliminary in nature; it includes inferred mineral resources that are considered too speculative geologically to have the economic considerations applied to them that would enable them to be categorized as mineral reserves, and there is no certainty that the PEA will be realized; 3. Production potential based on Yr. 1-5 Avg. for Florida Canyon, DeLamar, and Nevada North as described in detail within each respective technical report.

# Corporate Snapshot

## Share Structure<sup>1</sup>

Basic Shares Outstanding	201.5M
Options	3.0M
Warrants	6.6M
RSUs / DSUs	2.5M
Fully Diluted Shares Outstanding	213.6M
Basic Market Capitalization	~US\$730M
Cash Balance	~US\$115M

## Analyst Coverage<sup>1</sup>



STIFEL

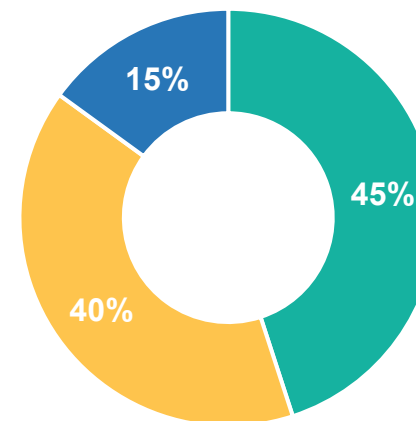


RAYMOND JAMES



## Approx. Ownership Breakdown<sup>2</sup>

### Top Institutional Investors



- Retail & Other
- Institutions & High Net Worth
- Strategic Investors & Insiders

### Key Strategic Investors



# Florida Canyon Mine

Nevada, USA



# Florida Canyon Mine: Overview

## Summary

- Heap leach gold operation located approximately 45 miles southwest of Winnemucca, Nevada, adjacent to Interstate Highway 80
- Continuous operation from 1986-2011 and then intermittently until 2015
  - Operated by Rye Patch Gold from 2015-2018; acquired by Alio Gold in 2018 who restarted & ramped up production; Alio was operator until its acquisition by Argonaut Gold in 2020; Integra became operator in 2024
- Conventional open pit operation using loader/truck heap leach techniques and carbon-in-column (CIC) gold recovery process; 6-years of remaining mine life with potential for extension through near mine oxide exploration
- Florida Canyon has achieved record annual production in recent years

## Mineral Reserves & Resources<sup>1</sup>

Category	Tonnes (Mt)	Gold Grade (g/t)	Gold Ounces (koz)
P&P	58.0	0.37	685
M&I	64.4	0.36	748
Inferred	94.8	0.72	2,203



# Florida Canyon Mine: Site Overview

Maintenance Shop



Site Aerial View



Mining



CIC Circuit



Recovery Plant

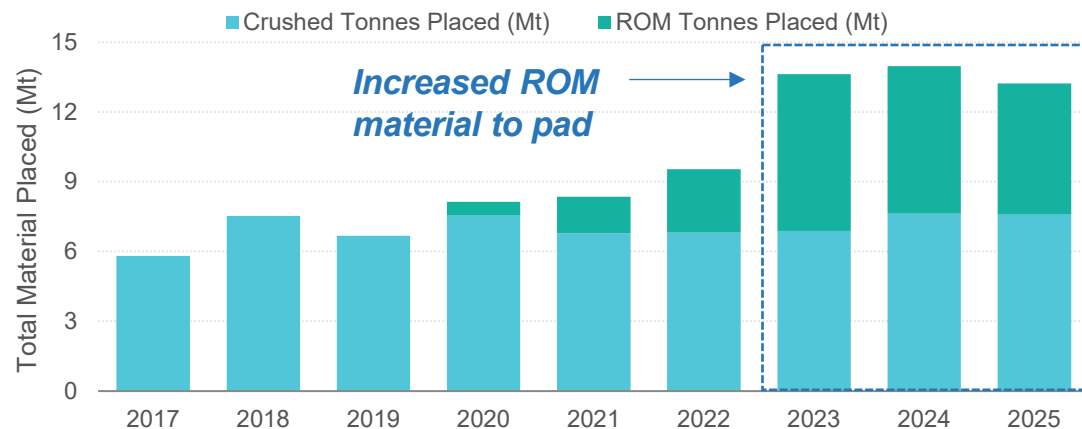


Crushing

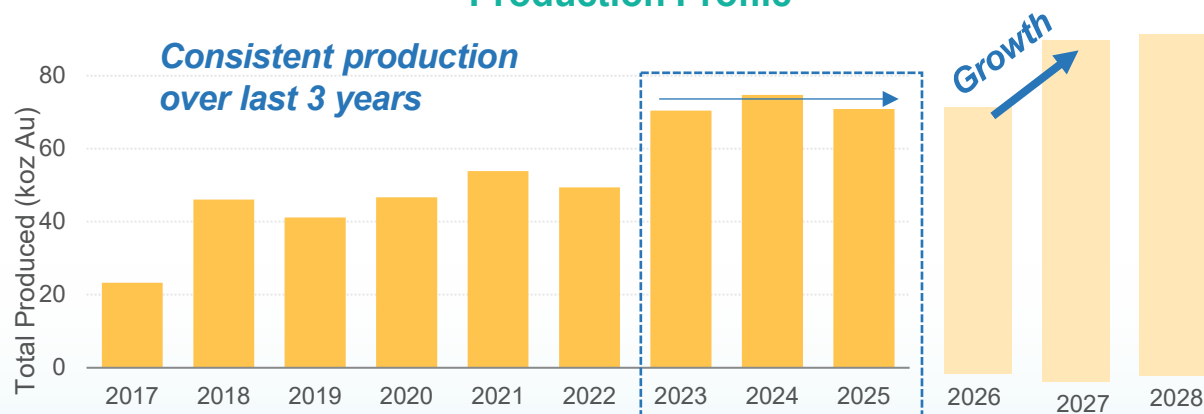


# Florida Canyon Mine: Operations Overview, Consistency & Growth

## Processing Profile



## Production Profile



## Operating Metrics

Operating Metrics	Unit	Q3 YTD 2025	FY 2025
Ore	kt	8,629	12,047
Waste	kt	8,164	10,584
Strip ratio	waste/ore	0.95	0.88
Crushed ore to pad	kt	5,649	7,580
ROM to pad	kt	3,638	5,647
Total to leach pads	kt	9,287	13,227
Processed grade	g/t Au	0.22	0.22
Gold recovery rate	%	60.5	60.1
Gold produced	oz	58,063	70,927
Gold sold	oz	57,999	70,919
Cash cost <sup>1</sup>	\$/oz sold	1,915	-
Mine-site AISC <sup>1</sup>	\$/oz sold	2,542	-

*Integra is focused on mine re-investment to drive long-term value*

# Florida Canyon Mine: Growth Outlook

Technical Report including updated mineral reserve estimate and mine plan expected to be announced mid-2026



## Guidance Summary

2026 Gold production	ounces	70,000 - 75,000
2027 & 2028 Gold production	ounces	80,000 - 90,000
Total cash cost <sup>1</sup>	\$/oz sold	\$1,900 - \$2,100
Mine-site AISC <sup>1</sup>	\$/oz sold	\$2,750 - \$2,950
Sustaining capital expenditures and leases	\$M	\$62.0 - \$68.0
Growth capital expenditures	\$M	\$7.5 - \$9.5

## Commentary & Focus Areas

**2026 highlighted by significant capital re-investment to support long-term growth and profitability in 2027, 2028 and beyond**

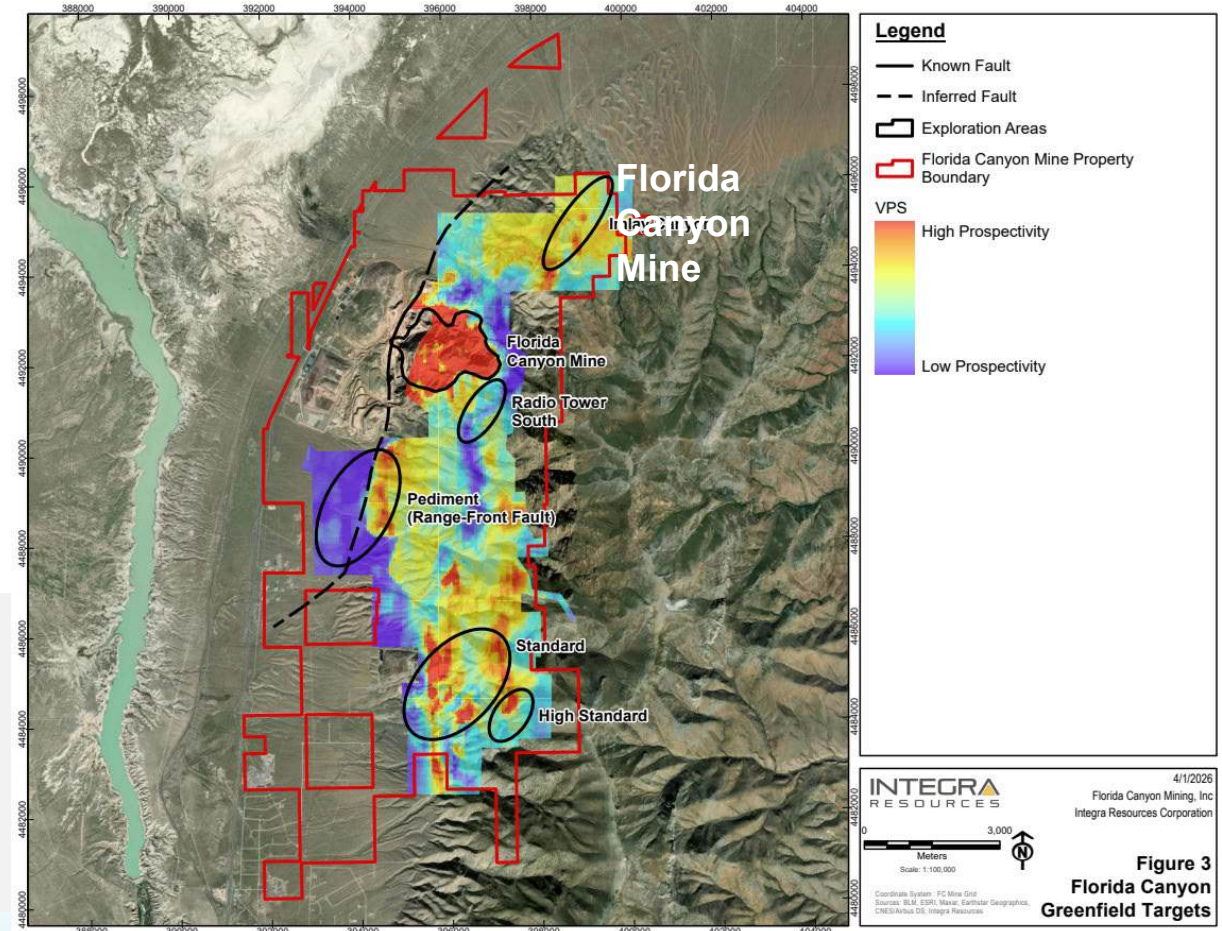
- **Mine Optimization:** numerous ongoing optimization studies at Florida Canyon focused on identifying areas for increased efficiency, process improvement, and cost reduction.
- **Sustaining Capital:** catch-up and current capitalized waste stripping to access new mining areas, mobile fleet rebuild and replacement financing, heap leach pad expansion, among other items.
- **Growth Capital:** expansion and growth projects including drill testing oxide growth targets, mobile equipment enhancement, pit wall slope optimization, and increasing run-of-mine material processing

# 2026 Drilling Program: Largest in Company History

50,000 m drill program targeting resource growth, mine life extension and development readiness

Florida Canyon	DeLamar	Nevada North
42,500 m drilling	2,500 m drilling	5,500 m drilling
<b>Target:</b> near-mine oxide growth	<b>Target:</b> Pre-construction detailed engineering	<b>Target:</b> resource conversion, hydrogeological, met and geotech
<b>Result:</b> Immediate production impact	<b>Result:</b> Build construction readiness	<b>Result:</b> PFS 2027 and permitting

- Infrastructure-led drilling → fastest path from discovery to production
- Exploration success converts directly to near-term production and cash flow



INTEGRA RESOURCES  
 4/1/2026  
 Florida Canyon Mining, Inc  
 Integra Resources Corporation  
**Figure 3**  
**Florida Canyon**  
**Greenfield Targets**

# Florida Canyon Mine: Meaningful Near-Term Growth

## Exploration Proof of Concept: Near-Term Growth Where It Matters Most

### The Headline:

**Thick, near surface gold intercepts support mine life extension and near-term production growth**

### What it is:

- Selected intercepts include <sup>(1)</sup>:
- 2025-Met-R02: 138 m @ 0.32 g/t Au (Radio Tower)
  - FCM25-0617: 128 m @ 0.36 g/t Au (C7)
  - Multiple >100 m gold intercepts across stockpiles + in-situ<sup>(2)</sup>
  - Significant % well above cut-off grade<sup>(2)</sup>

### Why it matters:

- Within/adjacent to existing pits → minimal capital
- Near infrastructure → immediate mine plan relevance
- Low strip, heap leach → high-margin ounces
- Supports July 2026 resource + LOM update

# Florida Canyon Mine: Growth Potential

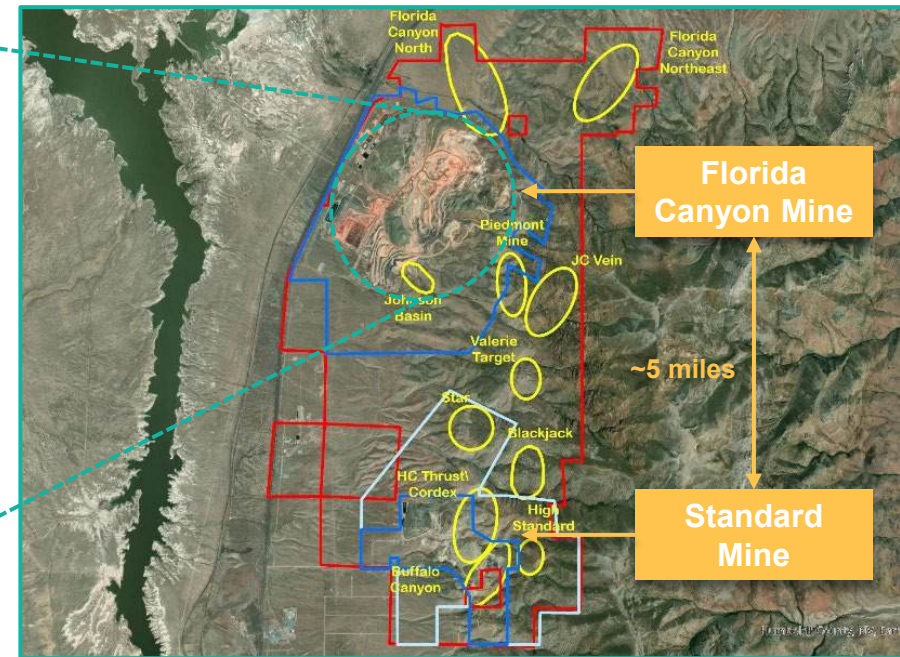
Integra focused on defining additional oxide material to support production growth and mine life extension

## Near Mine Growth



**Opportunity:** Large volumes of historical waste/back fill material; numerous pits, divided by sparsely drilled saddles; Integra to evaluate possibility of processing material previously below cut-off and connecting pits; potential source of oxide material to increase scale and mine life

## Regional Growth



**Opportunity:** Standard Mine (south of Florida Canyon) produced >220koz Au between 2004-2015, situated within same productive geological structure; no recent drilling at Standard Mine, limited drilling between Standard Mine and Florida Canyon; drill targets identified

# Florida Canyon Mine: Growth Drilling

Drilling designed to support an updated mineral reserve & resource and life-of-mine plan expected in 2026

## Drill Program Highlights

### *Opportunity 1: Near-surface oxide potential from historical dumps*

- Targeting large volumes of historical gold-mineralized backfill and low-grade waste material previously estimated to be below the mining cut-off grade in a significantly lower gold price environment; greatest near-term opportunity to increase mineral resources and potentially extend mine life.

### *Opportunity 2: Expand in-situ resources between existing mine open pits*

- Targeting “saddle/ridge” areas located between active and historical pits. Many of these areas sparsely drilled historically and offer meaningful oxide growth potential directly adjacent to current and future mining phases.

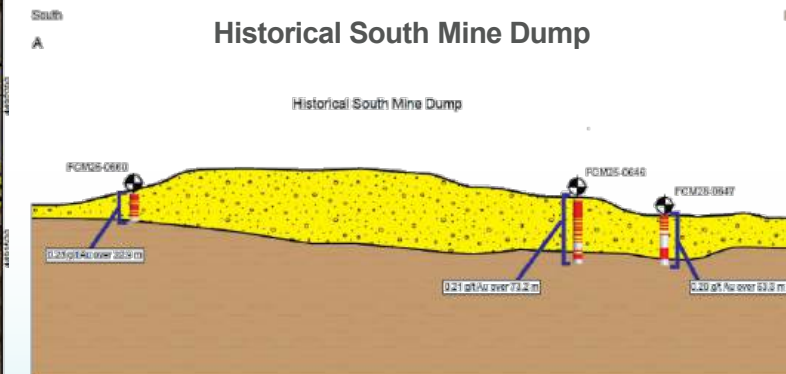
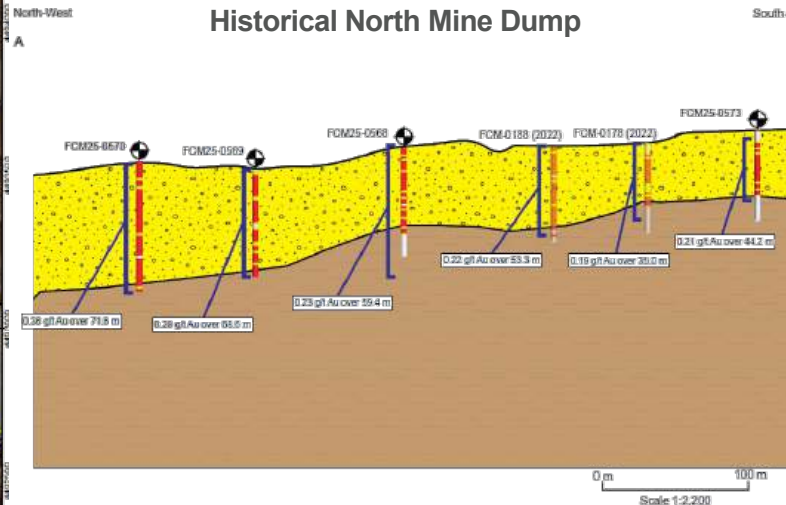
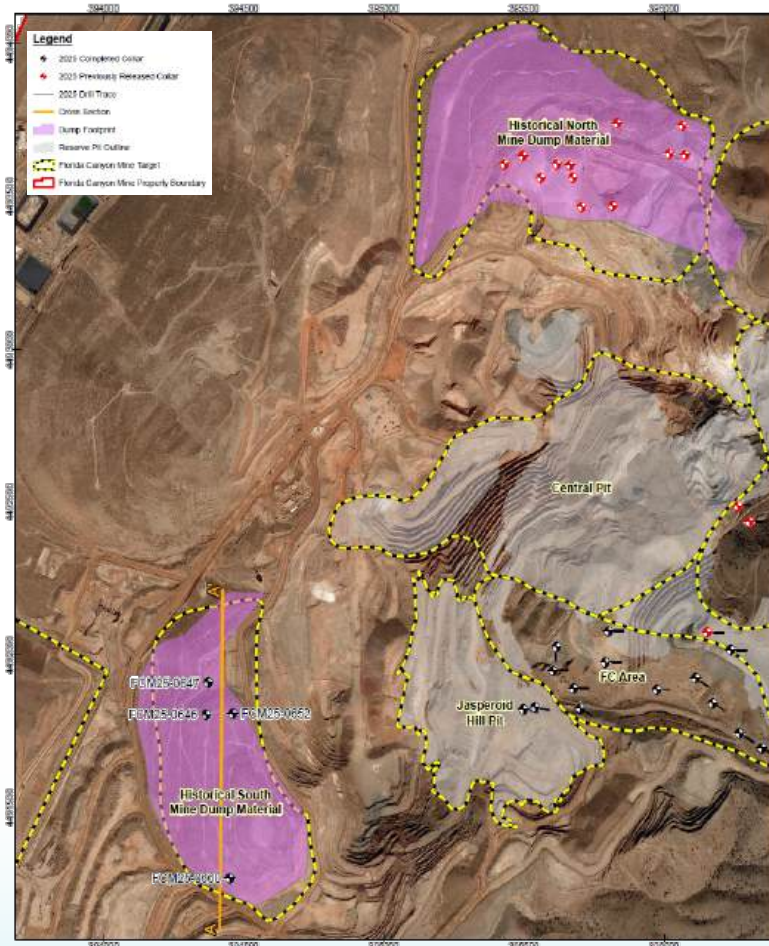
### *Opportunity 3: Test lateral extensions and in-pit infill*

- Targeting lateral extensions of existing pits and infill drilling within areas planned for further pit pushbacks. Potential identified to improve resource classification, optimize mine planning, and increase short-term ore feed.



# Florida Canyon Mine: North & South Dump Results

Drilling results and preliminary volume / grade estimates underscore near-term growth potential<sup>1</sup>



Conceptual Estimates <sup>1</sup>	Volume (Mt)	Grade (g/t Au)
North Dump	~19 - 32	~0.11 - 0.25
South Dump	~15 - 24	~0.11 - 0.25
<b>Combined</b>	<b>~34 - 56</b>	<b>~0.11 - 0.25</b>

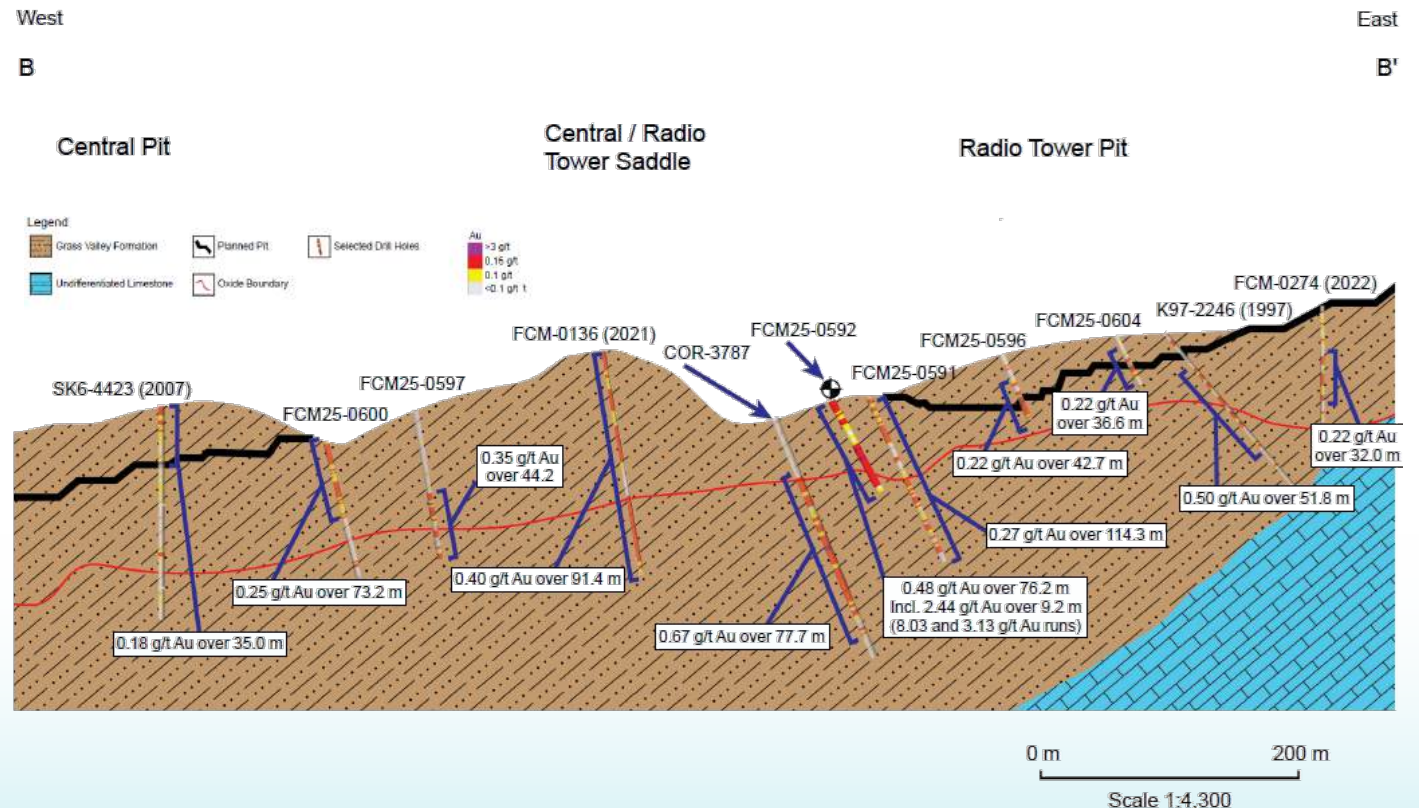
## Commentary<sup>1</sup>

- Material originally mined from the late-1980s to mid-1990s when gold prices were US\$325 - \$450/oz and cut-off grades were 0.28 - 0.34 g/t Au
- Tonnage ranges derived from an estimated mineable percentage of the total volume calculated from 3D surfaces and an approximation of the volume of material exceeding the current mining cut-off grade

# Florida Canyon Mine: Inter-Pit Results

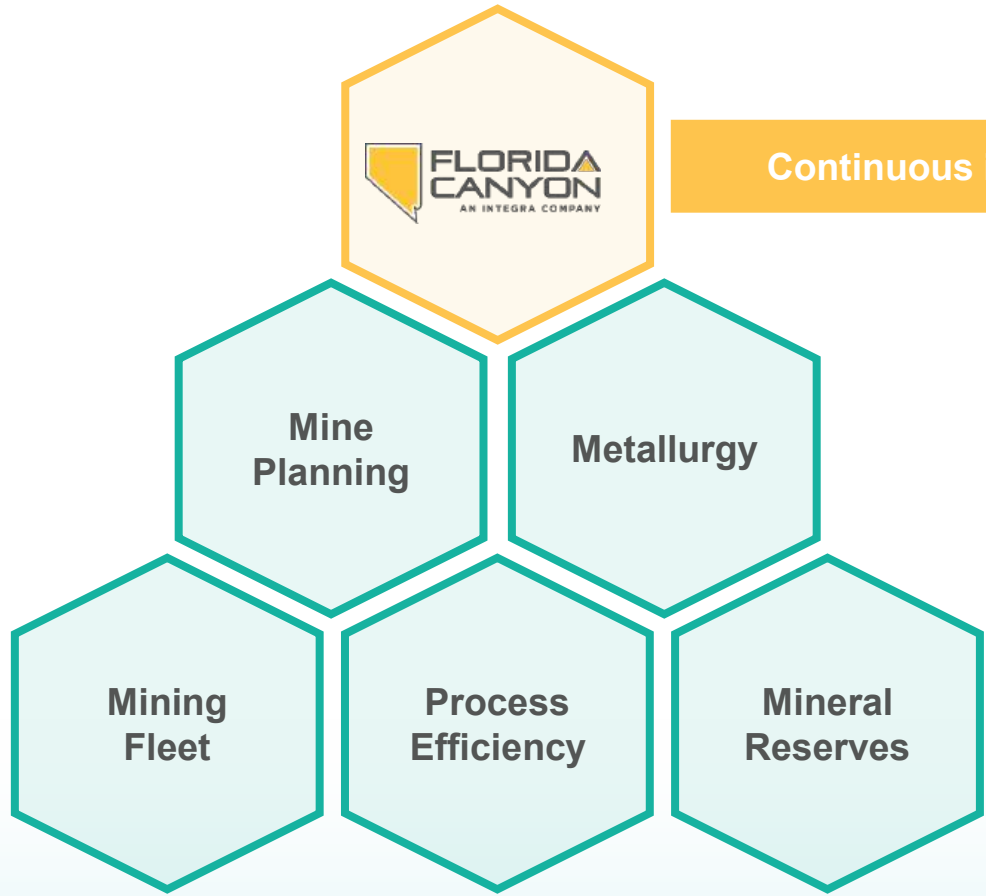
Inter-Pit areas between active and historical pits offer meaningful growth potential adjacent to current mining area

*Results confirm broad, near-surface intervals of gold mineralization with consistent gold grades and heap leach potential; Central/Radio Tower Saddle areas show best potential*



# Florida Canyon Mine: Updated 2026 Technical Report

Ongoing optimization studies, trade-off analysis, and growth drilling to be reflected in an updated NI 43-101 study mid-2026



Continuous improvement and growth initiatives across mining operation



# DeLamar Project

---

Idaho, USA



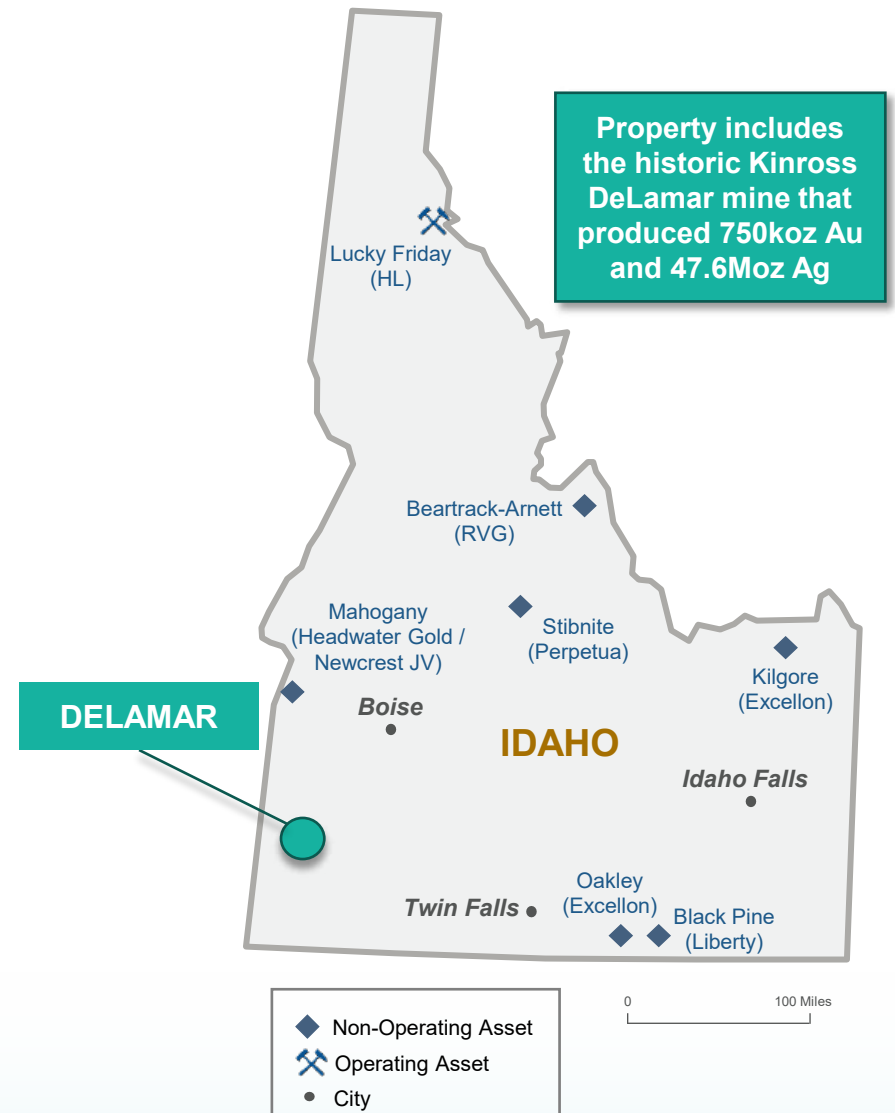
# DeLamar Heap Leach Project: Overview

## Summary<sup>1</sup>

- 100% owned gold-silver project in southwestern Idaho, 80 km southwest of the city of Boise; consists of DeLamar and Florida Mountain deposits
- Project was acquired from Kinross in 2017 (operated in the late 1990s); since acquisition Integra has completed a numerous mineral resource and reserve updates, a PEA in 2019, a PFS in 2022 and a Feasibility Study in 2025
- **Total defined resource of 1.9Mozs AuEq Proven & Probable, 4.6Mozs AuEq Measured & Indicated and 0.6Mozs AuEq Inferred**
- DeLamar is one of the most advanced heap-leach development projects in the United States; federal permitting begins in 2026 with 15-month NEPA process culminating in Record of Decision expected in 2027

## Mineral Reserves & Resources<sup>1</sup>

Category	Tonnes (Mt)	Gold Grade (g/t)	Silver Grade (g/t)	Gold Ounces (koz)	Silver Ounces (Moz)
P&P	120.0	0.33	13.56	1,259	52.3
M&I	245.8	0.37	18.20	2,945	144.2
Inferred	39.6	0.31	11.70	398	14.9



# DeLamar Heap Leach Project: 2025 Feasibility Study Highlights

Large-scale, conventional open pit oxide heap leach operation, with competitive cost profile and excellent economics



After-Tax NPV5%

**\$774M**      **\$1.9B**  
(Base Case)      (Current)

Initial Capital<sup>1</sup>

**\$389M**

AuEq Production

**106koz**      **119koz**  
(LOM Avg.)      (Yr 1-5 Avg.)

After-Tax IRR

**46%**      **97%**  
(Base Case)      (Current)

Mine Life

**10 years**

Total AuEq Payable<sup>1</sup>

**1.1Moz**

Payback

**1.8 yrs**      **1.0 yrs**  
(Base Case)      (Current)

NPV-to-Capex<sup>2</sup>

**2.0**      **4.9**  
(Base Case)      (Current)

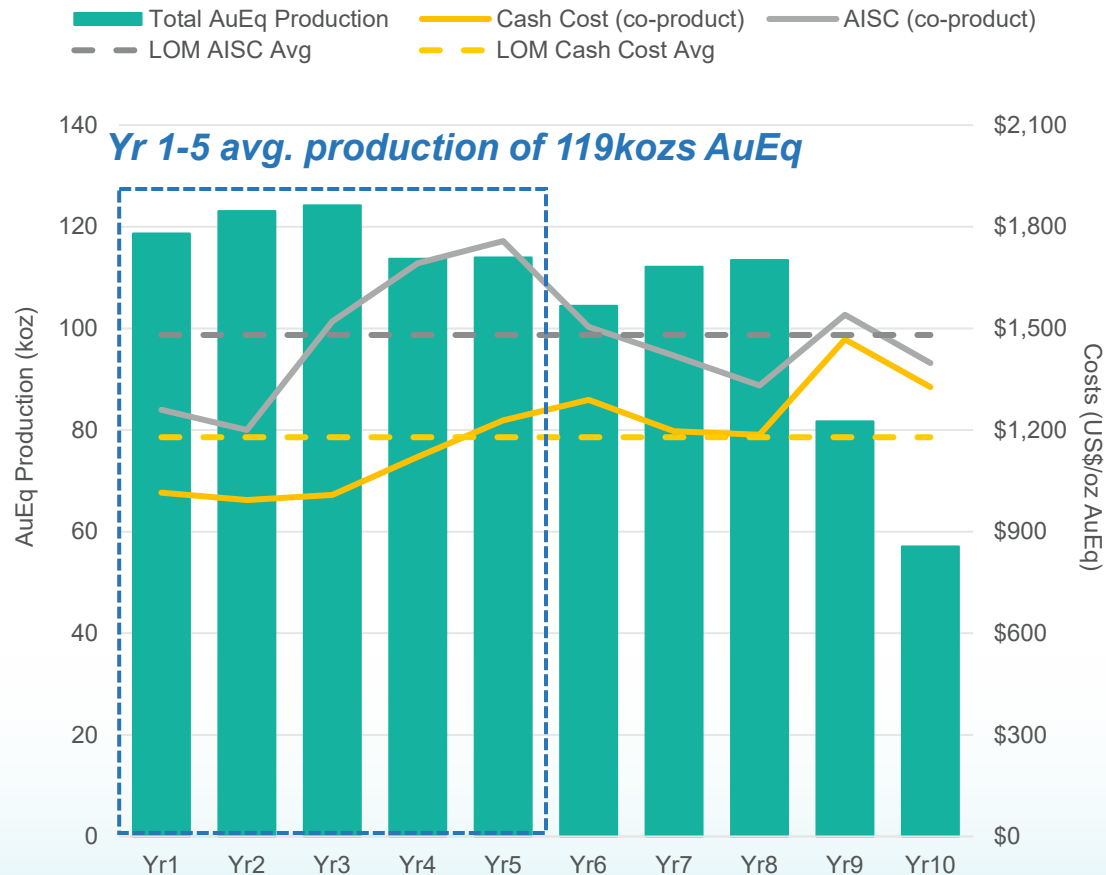
LOM AuEq Costs<sup>3</sup>

**\$1,179**      **\$1,480**  
(Cash Costs)      (AISC)

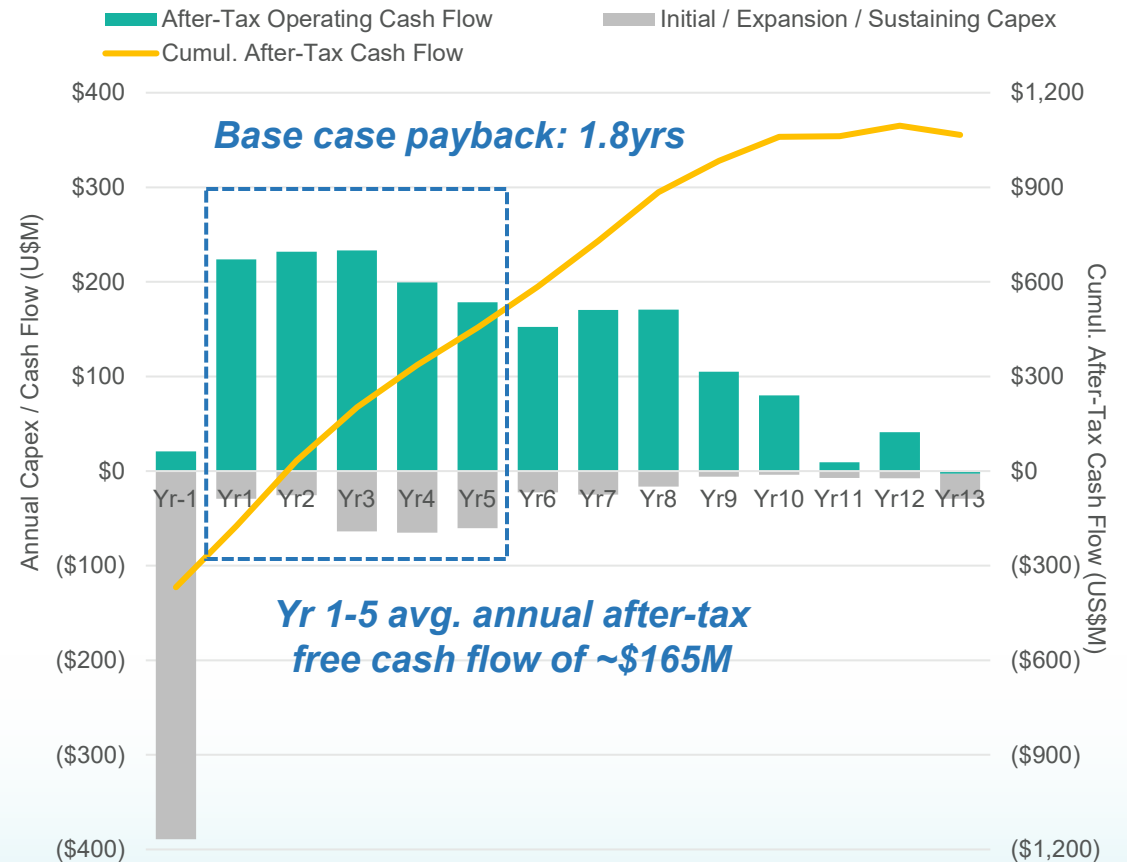
# DeLamar Heap Leach Project: 2025 Feasibility Study Highlights

10 year mine life delivers avg. production of 106koz AuEq at competitive site AISC (co-prod) of \$1,480/oz AuEq<sup>1</sup>

## Production & Cost Profile<sup>1</sup>



## Cash Flow Profile<sup>1</sup>



# DeLamar Heap Leach Project: Next Steps

Early works underway to fund procurement, land acquisition, and other low-risk activities to reduce execution risk at DeLamar

## Next Steps

- ➔ **Permitting:** Ongoing work with the BLM to determine Federal/NEPA permitting schedule
- ➔ **Pre-production capital investment:** begin pre-production projects including procurement work, early works, and strategic land purchase
- ➔ **Project financing preparation:** kick-off discussions and analysis in 2026
- ➔ **Engineering and optimization:** advancing detailed engineering and execution planning

## February 2026 Financing Overview

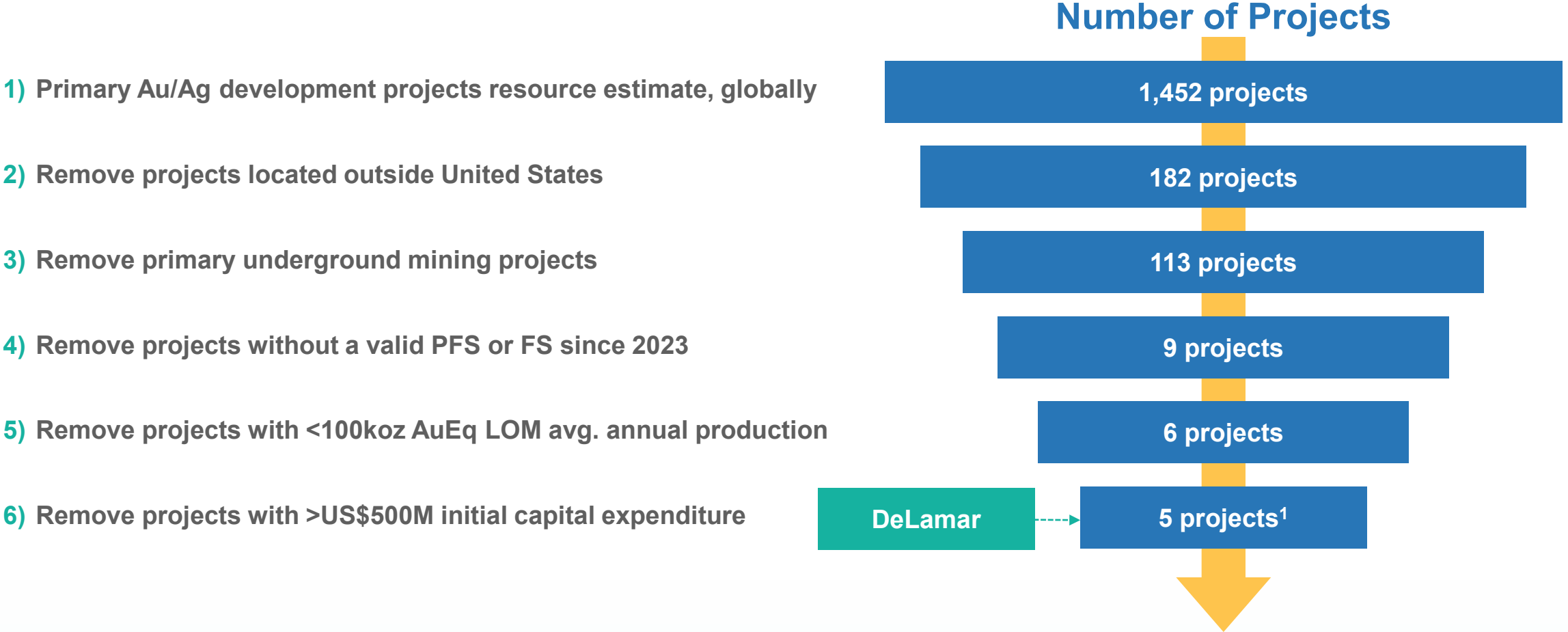
### US\$61M Bought Deal Financing – Use of Proceeds Breakdown

2026 Early Works Program	~\$16.0M
2026 Procurement Works	~\$12.0M
Land Acquisition	~\$12.5M
2027 Early Works Program	~\$4.5M
2027 Procurement Works	~\$12.5M

*February 2026 financing enhances project readiness, lowers future financing risk, and supports a more efficient path toward a construction decision*

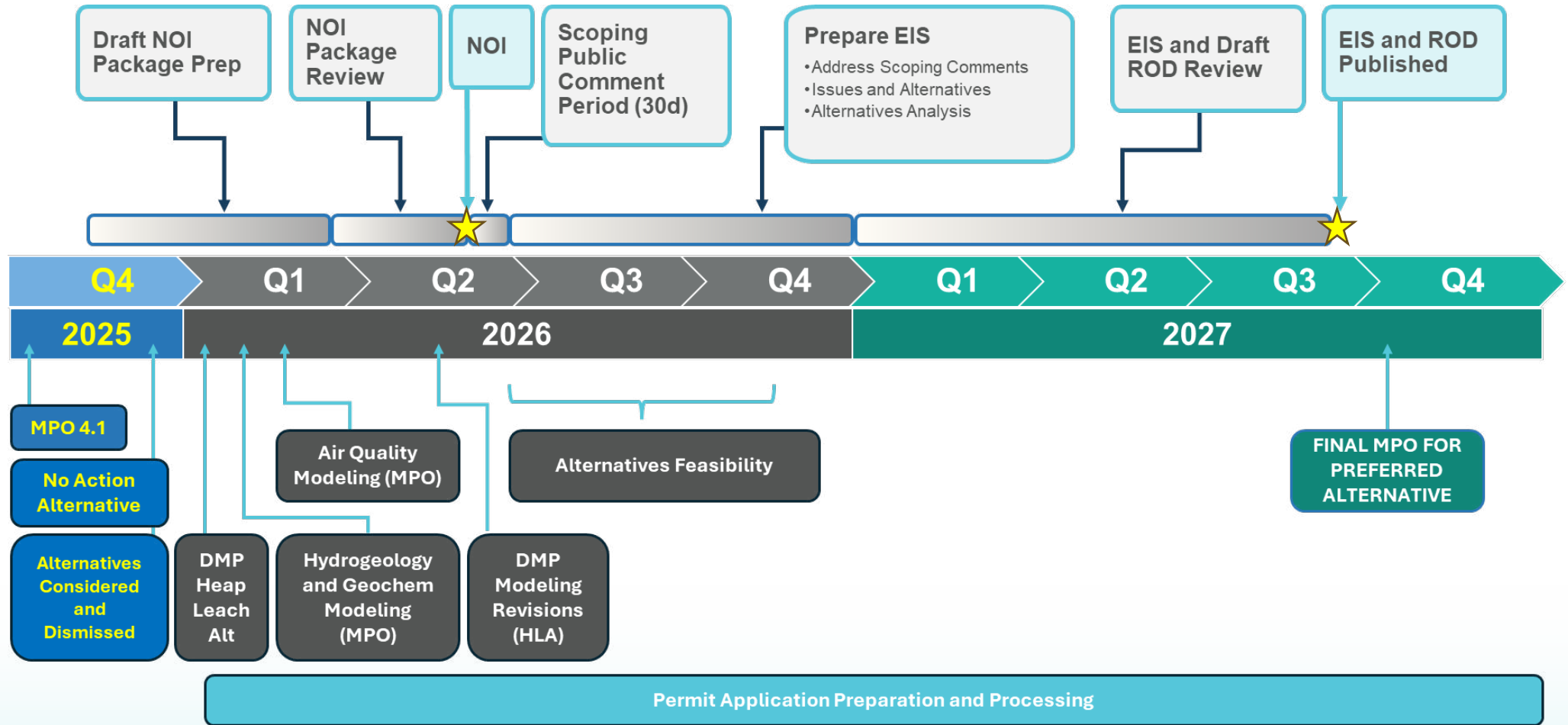


# DeLamar Heap Leach Project: Significant Scarcity Value



DeLamar stands among a select group of U.S. gold-silver projects in advanced development and permitting

# DeLamar Heap Leach Project: NEPA Permitting Schedule



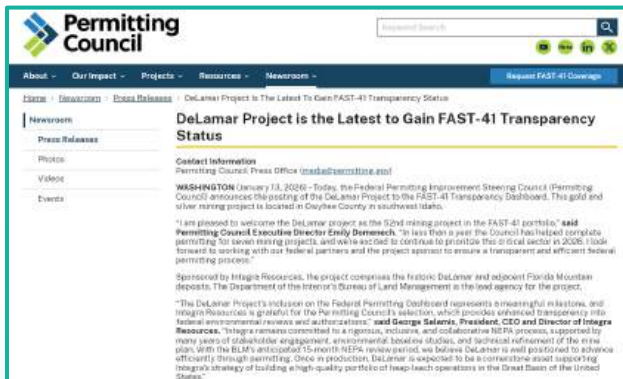
# USA Project Advancement: The Right Time

## DeLamar selected for FAST-41 Transparency Projects Program in January 2026



### Immediate Measures to Increase American Mineral Production Executive Order:

- Executive Order signed by President Donald Trump in March 2025
- Aimed at boosting domestic critical mineral production (including gold), reducing reliance on foreign adversaries, and solidifying pathway toward mineral independence
- Specific initiatives include fast-tracking permits, expanding land access, clarifying the Mining Act, mobilizing capital and strategic stockpiling and procurement for domestic minerals



### Fast-41 Transparency Projects Program:

- DeLamar selected for in January 2026 for FAST-41 Transparency Projects Program
- Dashboard is designed to enhance federal permitting transparency, coordination, and accountability through the U.S. Federal Permitting Improvement Steering Council
- Key benefits for DeLamar: accelerated decision making, enhanced process certainty and predictability, and improved federal support and oversight.

# Integra & Shoshone-Paiute: DeLamar Relationship Agreement

Relationship Agreement aligns interests of Integra and a federally recognized Tribal Nation to develop DeLamar Project

## Agreement Overview

- **Business-driven:** mutually beneficial arrangement to advance DeLamar operating as a partnership.
- **Established framework:** key components: Stewardship, Economic Participation, Governance, Life-of-Mine Commitment.
- **5+ years in the making:** extensive in-person engagement, site visits, consultation on mine design/baseline studies, and community meetings.



## Benefits to Integra

- **Enhanced position:** Agreement driven by predictability, efficiency, and partnership for the development of DeLamar.
- **Interest alignment:** incorporates key Tribal cultural, environmental and economic interests into mine plan; increased predictability for DeLamar milestones.
- **Reputation & brand building:** ability to successfully mitigate project risks and foster reputation for respectful business practices benefits current/future operations.

# Nevada North Project

---

Nevada, USA



# Nevada North Heap Leach Project: Overview

## Summary<sup>1</sup>

### Wildcat Deposit:

- PEA stage, low-sulphidation epithermal gold-silver deposit located in the Farrell Mining District, Nevada, ~56km from the town of Lovelock; 17,612-acre land package including 916 unpatented and 4 patented claims
- **Total defined resource of 829koz AuEq M&I and 235koz AuEq Inferred**

### Mountain View Deposit:

- PEA stage, low-sulphidation epithermal gold-silver project located in the Deephole Mining District, Nevada, ~24km from the town of Gerlach; 5,476-acre land package, consisting of 284 unpatented claims
- **Total defined resource of 622koz AuEq M&I and 63koz AuEq Inferred**

## Combined Mineral Resources<sup>1</sup>

Category	Tonnes (Mt)	Gold Grade (g/t)	Silver Grade (g/t)	Gold Ounces (koz)	Silver Ounces (Moz)
Measured	-	-	-	-	-
Indicated	88.6	0.46	3.45	1,324	9.8
M&I	88.6	0.46	3.45	1,324	9.8
Inferred	26.6	0.32	2.60	270	2.2



# Nevada North Heap Leach Project: Simple, High-Margin Operation

2023 PEA outlined a simple, low-cost, high margin operation with significant exploration upside; being updated to PFS in 2026

**13-year LOM**  
100Mt of Ore Mined

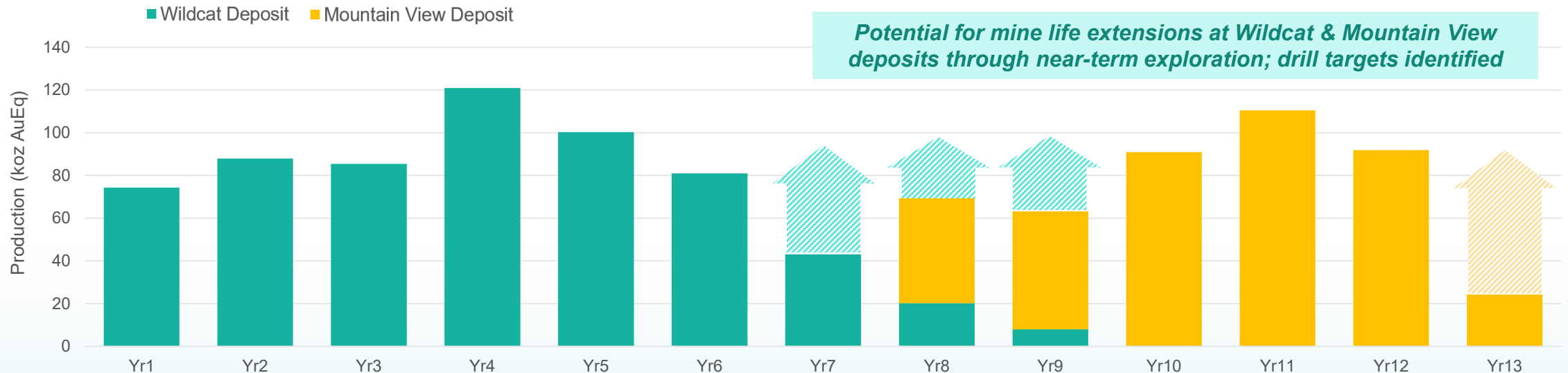
**1Moz / ~80koz AuEq**  
Total / Avg. LOM  
Production

**US\$973/oz**  
LOM AISC  
(co-product)<sup>1</sup>

**US\$310M NPV5%**  
**37% IRR**  
After-Tax  
(US\$1,700/oz Au)<sup>2</sup>

**3-year Payback**  
After-tax

Production Profile



# Wildcat Heap Leach Deposit: Exploration Potential

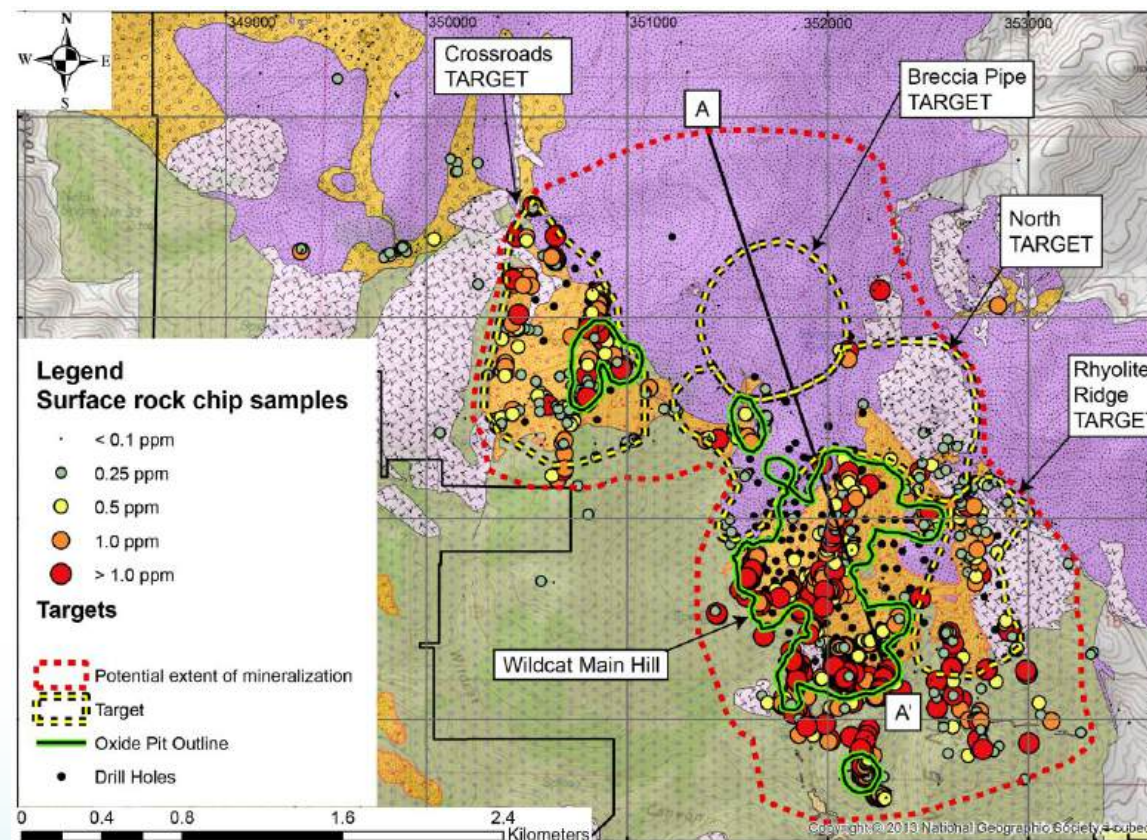
Wildcat is located ~30 miles away from currently operating Florida Canyon mine and demonstrates solid growth potential

## Commentary

- Mineralized targets discovered at surface outside the current pit; surface samples collected in 2022 returned grades up to 30 g/t oxide Au
- Mineralized footprint at Wildcat was significantly expanded in 2022 to ~3.0km x 2.0km (previously 1.5km x 1.5km)
- Wildcat has only been drilled on ~5-acres of total +17,000-acre land package
- EPO (submitted to BLM) to allow for 400 acres of surface disturbance vs. 5-acre disturbance limit under current Notice of Operation (NOO)

**Mineralized tuff breccia (orange) wraps beneath post-mineral basalts (purple) demonstrating exploration upside to adjacent to 2023 PEA pit**

## Wildcat Surface Samples



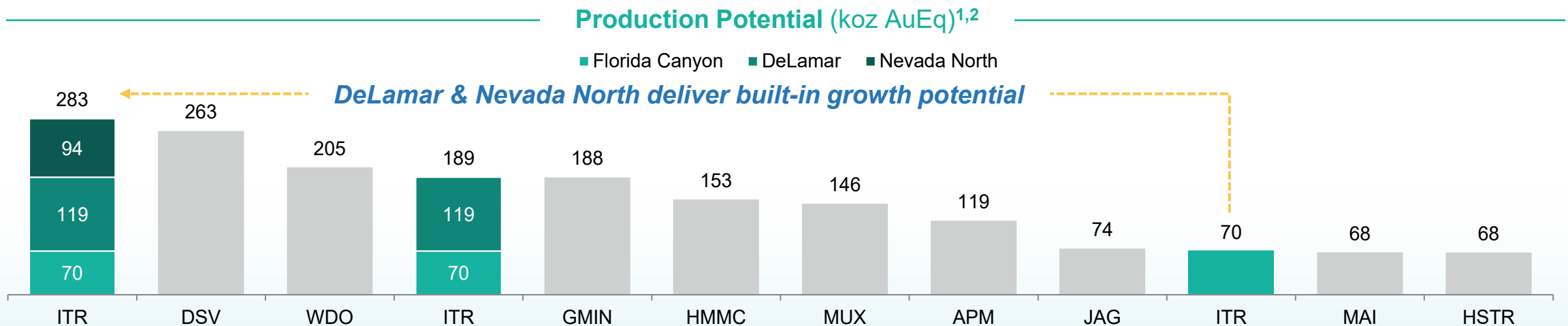
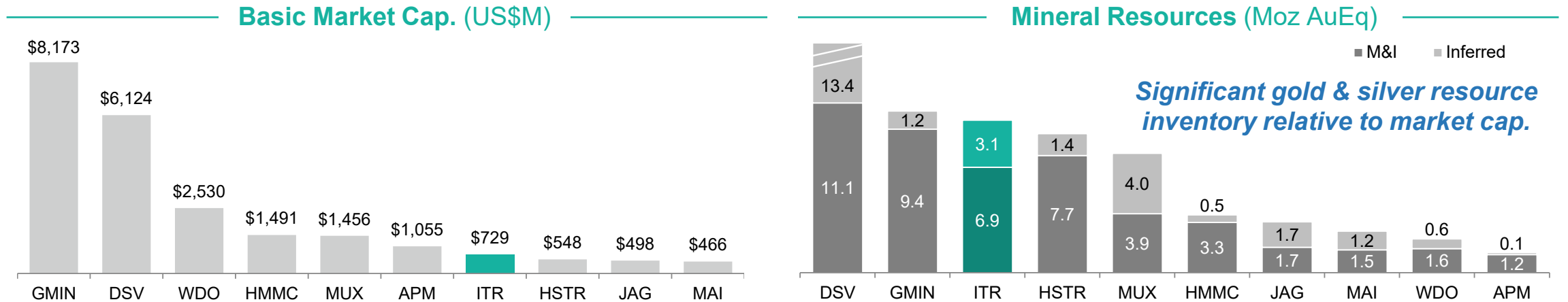
# Integra's Value Proposition

---



# Relative Positioning: Cash Flow, Resource Scale & Growth Potential

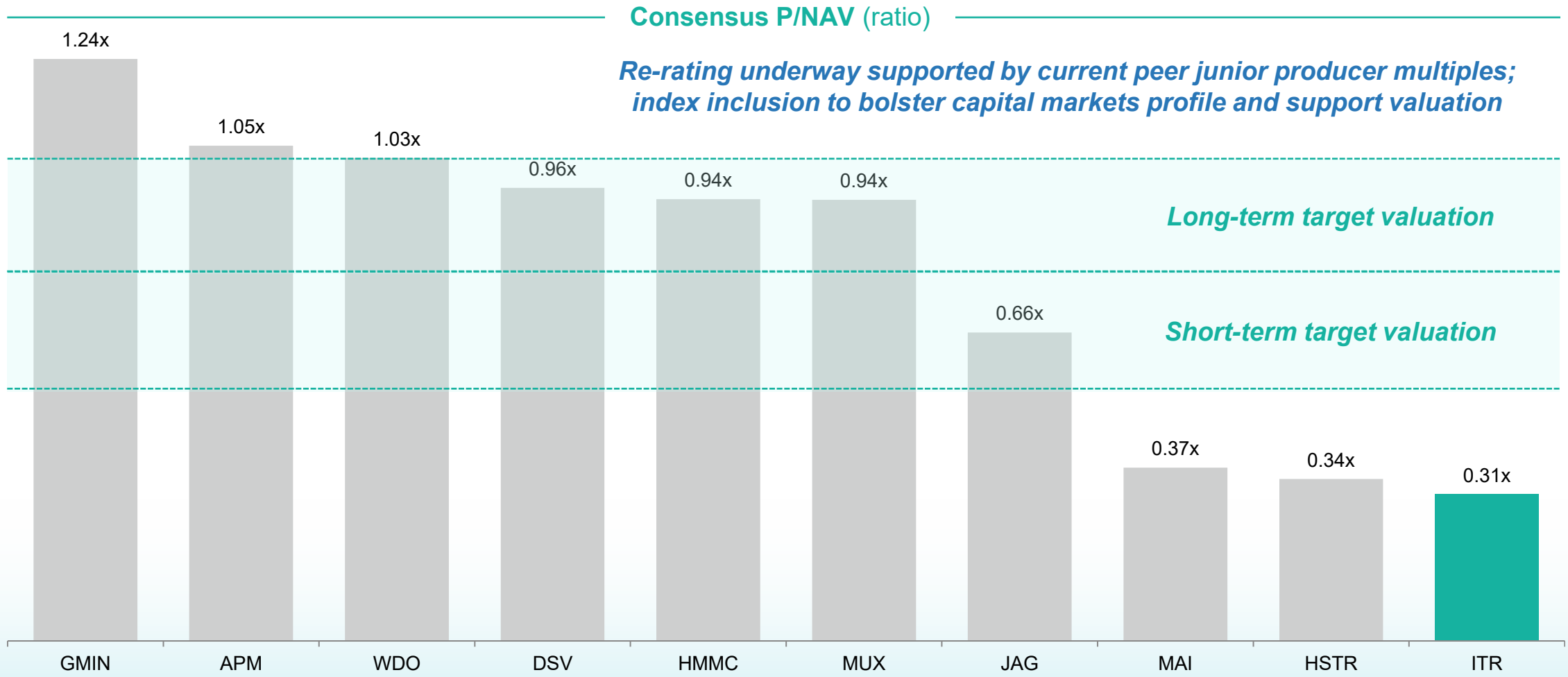
Production and cash flow from Florida Canyon supports built-in growth pipeline: DeLamar and Nevada North



Note: Gold equivalent using US\$3,000/oz Au and US\$35/oz Ag; Refer to NI 43-101 technical report titled "Technical Report Florida Canyon Gold Mine, Pershing County, Nevada, USA", dated July 11, 2024, with an effective date of June 28, 2024, Refer to NI 43-101 technical report titled "Feasibility Study and Technical Report on the DeLamar Project, Owyhee County, Idaho, USA", dated February 2, 2026, with an effective date of December 8, 2025, and NI 43-101 technical report titled "Technical Report Preliminary Economic Assessment for the Wildcat & Mountain View Projects, Pershing and Washoe Counties, Nevada, USA", dated July 30, 2023, with an effective date of June 28, 2023, all available under Integra's SEDAR+ profile at [www.sedarplus.ca](http://www.sedarplus.ca) and EDGAR profile at <https://www.sec.gov>; PEA is preliminary in nature; it includes inferred mineral resources that are considered too speculative geologically to have the economic considerations applied to them that would enable them to be categorized as mineral reserves, and there is no certainty that the PEA will be realized; 1. Peer estimates based on average 2026E-2027E consensus production estimates; 2. Production potential based on Yr 1-5 average for Florida Canyon, DeLamar, and Nevada North as described in detail within each respective technical report.

# Relative Positioning: Closing the Valuation Gap

Re-rating driven by consistent production and cash flow from Florida Canyon and advancement of development portfolio



# 2026-2027: Multiple Near-Term Catalysts Driving Growth, De-Risking & Re-Rating

## 2026: Execution & Resource Growth

- Ongoing 50,000 m drill program across portfolio
- Florida Canyon resource & mine plan update (mid-2026)
- Continued 70–75 koz gold production and cash flow generation
- Optimization initiatives driving efficiency & cost improvements
- Advancing DeLamar permitting (FAST-41) and early works

## 2027: De-Risking & Growth Visibility

- Florida Canyon production growth to 80–90 koz
- DeLamar Record of Decision (permit) expected
- Nevada North Pre-Feasibility Study (early-2027)
- Project financing initiatives at DeLamar leveraged by built up cash-flow
- Continued exploration success feeding pipeline

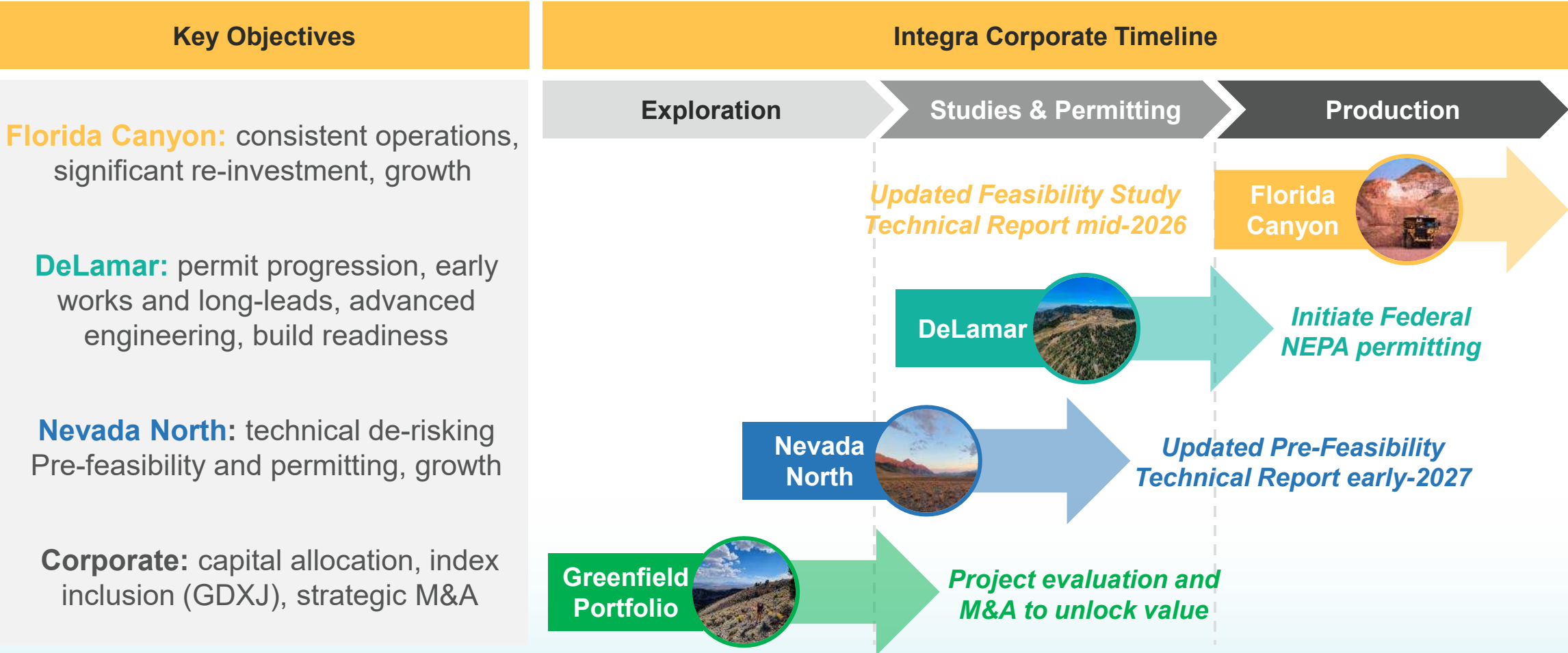
## Why it matters:

- ✓ **Near-term:** Consistent production + cash flow supports growth
- ✓ **Medium-term:** Resource growth & mine life extension at Florida Canyon
- ✓ **Long-term:** Transition toward a **250 to 300 koz AuEq multi-asset platform**
- ✓ **Cash flow today funds the next mine and the next re-rating**

Multiple catalysts expected to drive valuation re-rating vs peers

# Next Steps & Corporate Timeline

Near term success through profitability, rapid project advancement, disciplined capital allocation, and strategic M&A



# Building a Mid-tier Precious Metals Producer

<b>Production &amp; Cash Flow</b>	Florida Canyon delivers consistent production and cash flow delivering exposure to the strong gold price environment; excellent potential for mine life extension
<b>Growth Pipeline</b>	Cash flow from Florida Canyon supports built-in growth pipeline via DeLamar and Nevada North; clear pathway to significantly growing annual production profile
<b>Resource Scale</b>	Peer leading resource inventory with 6.9Moz AuEq M&I and 3.1Moz AuEq Inf. <sup>1</sup> across three high-quality assets, each with untapped exploration potential
<b>Jurisdiction</b>	Scarcity of advanced assets in the USA; portfolio creates potential 20+ year mining platform within Great Basin; opportune time to be advancing projects in USA
<b>Team</b>	Strengthened leadership well positioned to optimize Florida Canyon and advance DeLamar, Nevada North; support from large institutions and strategic investors
<b>Attractive Valuation</b>	Integra trades at a discount to junior producer peers; unique value proposition driven by combination of production and development focused within Great Basin of the USA



# Appendix

**INTEGRA**  
RESOURCES

# Board of Directors & Advisors

Board of Directors with deep industry knowledge and strong governance to support the execution of Integra's strategy



**Anna Ladd-Kruger**  
Chair of Board

- +25 years of experience
- Recent board experience with SilverCrest Metals and 1911 Gold; former CFO at McEwen Mining



**Ian Atkinson**  
Director

- +50 years of experience
- Former CEO at Centerra; experience with Hecla, Kinross, Noranda; involved in several major discoveries



**Carolyn Clark Loder**  
Director

- +30 years of experience
- U.S. National Mining Hall of Fame; led mineral rights and tribal relations for Freeport McMoRan



**Timo Jauristo**  
Director

- +35 years of experience
- CEO of South Pacific Metals; previously EVP of Corporate Development at Goldcorp



**C.L. "Butch" Otter**  
Director

- Served as the 32<sup>nd</sup> Governor of Idaho from 2007 to 2019
- Pre-politics: 30+ years as a business leader including President of Simplot



**Janet Yang**  
Director

- +20 years of experience
- Current CFO at Reveam; previously with GMT Capital and served on Board of Argonaut Gold



**Chantal Lavoie**  
Director

- +40 years of experience
- Served as COO of Rio Tinto Iron Ore Co. of Canada, COO of Dominion Diamond Corp and President & CEO of Crocodile Gold Corp.



**Leonard Kosinski**  
Advisor

- +30 years of experience
- Retired 3-star U.S. Air Force General; recently worked with Department of Defense and the Pentagon

# Corporate Outlook

Focused on optimization and capital investment at Florida Canyon and significant advancement of development projects

## Guidance Summary

2026 Florida Canyon Mine: gold production	ounces	70,000 - 75,000
2027 & 2028 Florida Canyon Mine: gold production	ounces	80,000 - 90,000
2026 Florida Canyon Mine: total cash cost <sup>1</sup>	\$/oz sold	\$1,900 - \$2,100
2026 Florida Canyon Mine: mine-site all in sustaining cost (“AISC”) <sup>1</sup>	\$/oz sold	\$2,750 - \$2,950
2026 Florida Canyon Mine: sustaining capital expenditures and leases	\$M	\$62.0 - \$68.0
2026 Florida Canyon Mine: growth capital expenditures	\$M	\$7.5 - \$9.5
2026 DeLamar & Nevada North Projects: project advancement	\$M	\$35.0 - \$40.0
2026 DeLamar: pre-production, early works, land acquisition	\$M	\$38.0 - \$42.0
Corporate: general and administrative expenses <sup>2</sup>	\$M	\$8.5 - \$9.0

**Florida Canyon:** 2026 represents a capital-intensive year of the long-term continuous improvement plan. Major investments are underway in key areas including a heap leach pad expansion, increased / catch-up capitalized waste stripping, a revitalized mobile equipment fleet, and growth

**DeLamar & Nevada North:** Integra remains committed to advancing its flagship development-stage heap leach projects. Efforts at DeLamar are focused on federal permit advancement, early-works capital investment, and construction readiness. Nevada North will see growth and resource conversion drilling and work begin for a Pre-feasibility study expected to be released in early 2027.

# Non-GAAP Financial Measures

## Cautionary Note Regarding Non-GAAP Financial Measures

The Company has included herein certain performance measures (“**non-GAAP measures**”) which are not specified, defined, or determined under generally accepted accounting principles (in our case, International Financial Reporting Standards, or “**IFRS**”). These are common performance measures in the gold mining industry, but because they do not have any mandated standardized definitions, they may not be comparable to similar measures presented by other issuers. Accordingly, we use such measures to provide additional information and you should not consider them in isolation or as a substitute for measures of performance prepared in accordance with generally accepted accounting principles (“**GAAP**”).

Please see the information under the heading “Non-GAAP Financial Measures” in the Company’s management’s discussion and analysis for the financial period ended September 30, 2025, which section is incorporated by reference in this presentation, for a description of non-GAAP measures related to the Company’s Florida Canyon mine. The Company’s management’s discussion and analysis may be found on SEDAR+ at [www.sedarplus.ca](http://www.sedarplus.ca) and on EDGAR at [www.sec.gov](http://www.sec.gov).

## Florida Canyon

### Cash Cost

Cash costs are a non-GAAP measure that includes production costs, royalties and excise taxes and certain non-cash adjustments for production costs on sale of acquired inventories, less silver revenue. Management uses this measure to monitor the performance of its mining operation and ability to generate positive cash flow on a site basis.

### All-In Sustaining Cost (“AISC”)

AISC is a non-GAAP measure that starts with cash costs and includes general and administrative (“**G&A**”) costs, reclamation accretion expense and sustaining capital expenditures. Management uses this measure to monitor the performance of its mining operation and ability to generate positive cash flow on an overall company basis.

## DeLamar & Nevada North

### Cash Cost

Cash costs include site operating costs (mining, processing, site G&A), refinery costs and royalties, but excludes head office G&A and exploration expenses. While there is no standardized meaning of the measure across the industry, the Company believes that this measure is useful to external users in assessing operating performance.

### AISC

Site level AISC includes cash costs and sustaining and expansion capital, but excludes head office G&A and exploration expenses. The Company believes that this measure is useful to external users in assessing operating performance and the Company’s ability to generate free cash flow from potential operations.

# Mineral Reserves & Resources<sup>1</sup>

Mineral Reserves		Proven			Probable			Proven & Probable		
GOLD (Au)		Tonnes (kt)	Grade (g/t)	Ounces (koz)	Tonnes (kt)	Grade (g/t)	Ounces (koz)	Tonnes (kt)	Grade (g/t)	Ounces (koz)
<i>Florida Canyon Mine (a)</i>	<i>Oxide</i>	-	-	-	58,035	0.37	685	58,035	0.37	685
<i>DeLamar Project (b)</i>	<i>Oxide</i>	11,675	0.40	149	108,297	0.32	1,110	119,972	0.33	1,259
	<i>Sulphide</i>	-	-	-	-	-	-	-	-	-
<b>TOTAL</b>	<b>Mixed</b>	<b>11,675</b>	<b>0.40</b>	<b>149</b>	<b>166,332</b>	<b>0.34</b>	<b>1,795</b>	<b>178,007</b>	<b>0.34</b>	<b>1,944</b>

Mineral Reserves		Proven			Probable			Proven & Probable		
SILVER (Ag)		Tonnes (kt)	Grade (g/t)	Ounces (koz)	Tonnes (kt)	Grade (g/t)	Ounces (koz)	Tonnes (kt)	Grade (g/t)	Ounces (koz)
<i>Florida Canyon Mine (a)</i>	<i>Oxide</i>	-	-	-	-	-	-	-	-	-
<i>DeLamar Project (b)</i>	<i>Oxide</i>	11,675	16.34	6,132	108,297	13.26	46,173	119,972	13.56	52,305
	<i>Sulphide</i>	-	-	-	-	-	-	-	-	-
<b>TOTAL</b>	<b>Mixed</b>	<b>11,675</b>	<b>16.34</b>	<b>6,132</b>	<b>108,297</b>	<b>13.26</b>	<b>46,173</b>	<b>119,972</b>	<b>13.56</b>	<b>52,305</b>

Mineral Resources		Measured			Indicated			Measured & Indicated			Inferred		
GOLD (Au)		Tonnes (kt)	Grade (g/t)	Ounces (koz)	Tonnes (kt)	Grade (g/t)	Ounces (koz)	Tonnes (kt)	Grade (g/t)	Ounces (koz)	Tonnes (kt)	Grade (g/t)	Ounces (koz)
<i>Florida Canyon Mine (a)</i>	<i>Oxide</i>	-	-	-	64,362	0.36	748	64,362	0.36	748	35,297	0.32	361
	<i>Sulphide</i>	-	-	-	-	-	-	-	-	-	59,532	0.96	1,842
<i>DeLamar Project (b)</i>	<i>Oxide</i>	15,548	0.41	204	139,953	0.31	1,400	155,501	0.32	1,604	19,813	0.26	163
	<i>Sulphide</i>	21,643	0.51	357	68,629	0.45	984	90,272	0.46	1,341	19,789	0.37	235
<i>Nevada North Project (c)</i>	<i>Oxide</i>	-	-	-	84,686	0.44	1,207	84,686	0.44	1,207	26,251	0.31	264
	<i>Sulphide</i>	-	-	-	3,938	0.92	117	3,938	0.92	117	360	0.60	7
<b>TOTAL</b>	<b>Mixed</b>	<b>37,191</b>	<b>0.47</b>	<b>561</b>	<b>361,568</b>	<b>0.38</b>	<b>4,456</b>	<b>398,759</b>	<b>0.39</b>	<b>5,017</b>	<b>161,041</b>	<b>0.55</b>	<b>2,872</b>

Mineral Resources		Measured			Indicated			Measured & Indicated			Inferred		
SILVER (Ag)		Tonnes (kt)	Grade (g/t)	Ounces (koz)	Tonnes (kt)	Grade (g/t)	Ounces (koz)	Tonnes (kt)	Grade (g/t)	Ounces (koz)	Tonnes (kt)	Grade (g/t)	Ounces (koz)
<i>Florida Canyon Mine (a)</i>	<i>Oxide</i>	-	-	-	-	-	-	-	-	-	-	-	-
	<i>Sulphide</i>	-	-	-	-	-	-	-	-	-	-	-	-
<i>DeLamar Project (b)</i>	<i>Oxide</i>	15,548	20.46	10,230	139,953	13.72	61,750	155,501	14.40	71,979	19,813	8.16	5,201
	<i>Sulphide</i>	21,643	32.90	22,922	68,629	22.30	49,254	90,272	24.87	72,176	19,789	15.20	9,664
<i>Nevada North Project (c)</i>	<i>Oxide</i>	-	-	-	84,686	3.22	8,768	84,686	3.22	8,768	26,251	2.57	2,171
	<i>Sulphide</i>	-	-	-	3,938	8.47	1,072	3,938	8.47	1,072	360	4.58	53
<b>TOTAL</b>	<b>Mixed</b>	<b>37,191</b>	<b>27.73</b>	<b>33,152</b>	<b>297,206</b>	<b>12.65</b>	<b>120,844</b>	<b>334,397</b>	<b>14.32</b>	<b>153,995</b>	<b>66,213</b>	<b>8.03</b>	<b>17,089</b>

# Florida Canyon Mine: Notes to Mineral Reserve & Resource Estimate

## **Notes to Mineral Reserves:**

1. Mineral reserves estimate has been converted into metric tonnes from short tons using a factor of 0.9072.
2. Mineral reserves are reported at the point of delivery to the process plant, using the 2014 CIM Definition Standards, based on the June 2024 Technical Report estimate with additional production depletion applied through December 31, 2025. The qualified person as defined under National Instrument 43-101 – Standards of Disclosure for Mineral Projects for the estimate is Ms. Terre Lane, MMSA QP, a Global Resource Engineering, Ltd. employee.
3. Mineral reserves are constrained within an open pit design that uses the following assumptions: gold price of US\$1,800/oz considering only oxide material; gold recoveries varied by deposit and ore type, ranging from 45% to 64%; reference mining cost of \$2.74/t mined in-situ and \$2.08/t mined fill; processing cost of \$4.97/t processed for oxide crushed material and \$2.67/t for oxide run-of-mine (“ROM”) material; G&A costs of \$1.20/t ore processed; treatment and refining costs of \$6.57/oz gold recoverable; royalty costs of \$88.00/oz gold recoverable; and pit slope inter-ramp angles ranged from 38–42° for rock and 30° for alluvium / fill.
4. Mineral reserves are reported at a cut-off grade ranging from 0.13 g/t to 0.20 g/t.
5. Mineral Reserves include a stockpile of 1,934 kt at an average grade of 0.19 g/t and total contained gold of 11.57 koz.
6. Mineral Reserves include Heap Leach Inventory of 3,548 kt at an average grade of 0.29 g/t and total contained gold of 32.58 koz.
7. Numbers have been rounded and may not sum.

## **Notes to Mineral Resources:**

1. Mineral resources estimate has been converted into metric tonnes from short tons using a factor of 0.9072.
2. Mineral resources are reported at the point of delivery to the process plant, using the 2014 CIM Definition Standards, based on the June 2024 Technical Report estimate with additional production depletion applied through December 31, 2025. The qualified person as defined under NI 43-101 for the estimate is Ms. Terre Lane, MMSA QP, a Global Resource Engineering, Ltd. employee.
3. Mineral resources are reported inclusive of those mineral resources converted to mineral reserves. Mineral resources that are not mineral reserves do not have demonstrated economic viability.
4. Mineral resources are constrained within a conceptual open pit shell that uses the following assumptions: gold price of US\$1,800/oz; gold recoveries ranging from 45% to 64% for oxides and 80% for sulfides; reference mining cost of \$2.74/t mined in-situ and \$2.08/t mined fill; processing cost of \$4.97/t processed for oxide crushed material and \$2.67/t processed for oxide ROM material; processing cost of \$23.15/t processed for sulfide material; general and administrative costs of \$1.20/t processed; treatment and refining costs of \$6.57/oz Au recoverable; royalty of \$88.00/oz Au recoverable, and pit slope overall angles ranging from 30–36°.
5. Mineral resources are reported at a cut-off grade ranging from 0.13 g/t to 0.20 g/t for oxides and is 0.56 g/t for sulfides.
6. Mineral resources include a stockpile of 1,934 kt at an average grade of 0.19 g/t and total contained gold of 11.57 koz.
7. Mineral resources include Heap Leach Inventory of 3,548 kt at an average grade of 0.29 g/t and total contained gold of 32.58 koz.

To the best of Integra Resources Corp.'s knowledge, information and belief, there is no new material scientific or technical information that would make the disclosure of the mineral resources or mineral reserves included in the Florida Canyon Report inaccurate or misleading.

# DeLamar Project: Notes to Mineral Reserve & Resource Estimate

## **Notes to Mineral Reserves:**

1. All Mineral Resource estimates have been prepared in accordance with NI 43-101 standards.
2. Mineral Resources that are not Mineral Reserves do not have demonstrated economic viability.
3. Jeffrey Bickel, of RESPEC Company LLC of Reno, Nevada, is a Qualified Person as defined in NI 43-101, and is responsible for reporting Mineral Resources for the DeLamar Project. Mr. Bickel is independent of the Company.
4. "Oxide", as listed above, is an aggregate category inclusive of all material types amenable to heap-leaching, including In-Situ Oxide, Stockpiles, and In-Situ Mixed material.
5. In-Situ Oxide/Mixed and Stockpile Mineral Resources are reported at a 0.17 and 0.1 g/t AuEq cut-off, respectively, in consideration of potential open-pit mining and heap leach processing.
6. Sulphide Mineral Resources are reported at a 0.3 g/t AuEq cut-off at DeLamar and 0.2 g/t AuEq at Florida Mountain in consideration of potential open pit mining and grinding, flotation, ultra-fine regrind of concentrates, and either Albion or agitated cyanide-leaching of the reground concentrates.
7. AuEq was calculated using a price of \$2,650/oz Au and a price of \$30/oz Ag, as well as metallurgical recoveries which were variable based on spatial area and each respective oxidation zone of the deposit.
8. The Mineral Resources are constrained by pit optimizations using a price of \$2,650/oz Au, a price of \$30/oz Ag, mining cost of \$2.50/tonne, variable processing costs ranging from \$3.26-\$5.30/tonne, and metallurgical recoveries ranging from 45%-95% for Au and 15%-92% for Ag. Variable metallurgical recoveries and processing costs correspond to various material types including Oxide, Transition, Sulphide, and Stockpile materials, as well as spatial zones of the deposit with defined metallurgical characteristics. The pit optimizations also used a G&A cost of \$0.65/tonne, pad replacement cost of \$1.00/tonne for heap leach material, and refining costs of \$0.00/oz and \$0.50/oz for Au and Ag, respectively.
9. Rounding as required by reporting guidelines may result in apparent discrepancies between tonnes, grades, and contained metal content.
10. The estimate of Mineral Resources may be materially affected by geology, environment, permitting, legal, title, taxation, sociopolitical, marketing, or other relevant issues.
11. Mineral Resources reported are inclusive of Mineral Reserves.
12. The Effective Date of the Mineral Resource Estimate is December 8, 2025

## **Notes to Mineral Resources:**

1. All estimates of Mineral Reserves have been prepared in accordance with NI 43-101 standards and are included within the current Measured and Indicated Mineral Resources.
2. Sterling K, Watson, P.Eng., of RESPEC Company LLC of Reno, Nevada, is a Qualified Person as defined in NI 43-101, and is responsible for reporting Mineral Reserves for the DeLamar Project. Mr. Watson is independent of the Company.
3. Mineral Reserves are based on prices of \$2,000/oz Au and \$25/oz Ag. The Mineral Reserves were defined based on pit designs that were created to follow optimized pit shells created in Whittle. Pit designs followed pit slope recommendations provided by RESPEC.
4. Mineral Reserves are reported using block value cutoff grades representing the cost of processing.
5. The Mineral Reserves are constrained by pit optimizations using a price of \$2,000/oz Au, a price of \$25/oz Ag, mining cost of \$2.50/tonne, variable processing costs ranging from \$3.26-\$5.30/tonne, and metallurgical recoveries ranging from 45%-95% for Au and 15%-92% for Ag. The pit optimizations also used a G&A cost of \$0.65/tonne, pad replacement cost of \$1.00/tonne for heap-leach material, and refining costs of \$0.00/oz and \$0.50 for Au and Ag, respectively.
6. Energy prices of US\$3.50 per gallon of diesel.
7. Pit optimizations were run on a range of prices from \$500/oz Au to \$3,000/oz Au.
8. The cut-off grade for Mineral Reserves is based on economics at a "Break-Even Internal" cut-off grade for the deposits.
9. The Mineral Reserves purposes of reference is the point where material is fed into the crusher.
10. All ounces reported herein represent troy ounces, "g/t Au" represents grams per tonne gold and "g/t Ag" represents grams per tonne silver.
11. Mineral Resources reported are inclusive of Mineral Reserves
12. Rounding as required by reporting guidelines may result in apparent discrepancies between tonnes, grades, and contained metal content.
13. The estimate of Mineral Reserves may be materially affected by geology, environment, permitting, legal, title, taxation, sociopolitical, marketing, or other relevant issues.
14. The Effective Date of the Mineral Reserves Estimate is December 8, 2025.

# Nevada North Project: Notes to Mineral Resource Estimate

## **Notes to Mineral Resources:**

1. Mineral resources that are not mineral reserves do not have demonstrated economic viability.
2. William Lewis, P.Geo, and Alan S J San Martin, AusIMM(CP), of Micon International Limited have reviewed and validated the mineral resource estimate for Wildcat & Mountain View, respectively. Both are independent qualified persons as defined in NI 43-101.
3. The Wildcat Deposit estimate is reported for an open-pit mining scenario, based upon reasonable assumptions. The cut-off grade of 0.15 g/t Au was calculated using a gold price of US\$1,800/oz, mining costs of US\$2.4/t, processing cost of US\$3.7/t, G&A costs of US\$0.5/t, and metallurgical gold recoveries varying from 73.0% to 52.0% and silver recoveries of 18%. An average bulk density of 2.6 g/cm<sup>3</sup> was assigned to all mineralized rock types. The Inverse Distance cubed interpolation was used with a parent block size of 15.24 m x 15.24 m x 9.144 m.
4. The Mountain View Deposit estimate is reported for an open-pit mining scenario, based upon reasonable assumptions. The cut-off grade of 0.15 g/t Au was calculated using a gold price of US\$1,800/oz, mining costs of US\$1.67/t to US\$2.27/t, processing cost of US\$3.1/t, G&A costs of US\$0.4/t, and metallurgical gold recoveries varying from 30.0% to 86.0% with a silver recovery of 20%. An average bulk density of 2.6 g/cm<sup>3</sup> was assigned to all mineralized rock types. Inverse Distance cubed interpolation was used with a parent block size of 7.62 m x 7.62 m x 6.10 m. Rounding as required by reporting guidelines may result in apparent discrepancies between tonnes, grades, and contained metal content.
5. Rounding as required by reporting guidelines may result in apparent discrepancies between tonnes, grades, and contained metal content.
6. The estimate of mineral resources may be materially affected by geology, environment, permitting, legal, title, taxation, sociopolitical, marketing, or other relevant issues.
7. Neither Integra Resources Corp.'s nor Micon's qualified person is aware of any known environmental, permitting, legal, title-related, taxation, socio-political, marketing, or other relevant issue that could materially affect the mineral resource estimate other than any information already disclosed in the Nevada North Report.
8. See NI 43-101 technical report titled: "Technical Report Preliminary Economic Assessment for the Wildcat & Mountain View Projects, Pershing and Washoe Counties, Nevada, USA", dated July 30, 2023, with an effective date of June 28, 2023 ("Nevada North Report"), available under Integra's SEDAR+ profile at [www.sedarplus.ca](http://www.sedarplus.ca) and EDGAR profile at <https://www.sec.gov>

# DeLamar Project: Untapped Exploration Potential

~28km<sup>2</sup> of highly prospective exploration ground along strike from current ~4.8Moz AuEq M&I resource; significant non-oxide potential underlying the oxide-mixed resource at DeLamar and Florida Mountain<sup>1</sup>

## BlackSheep Target

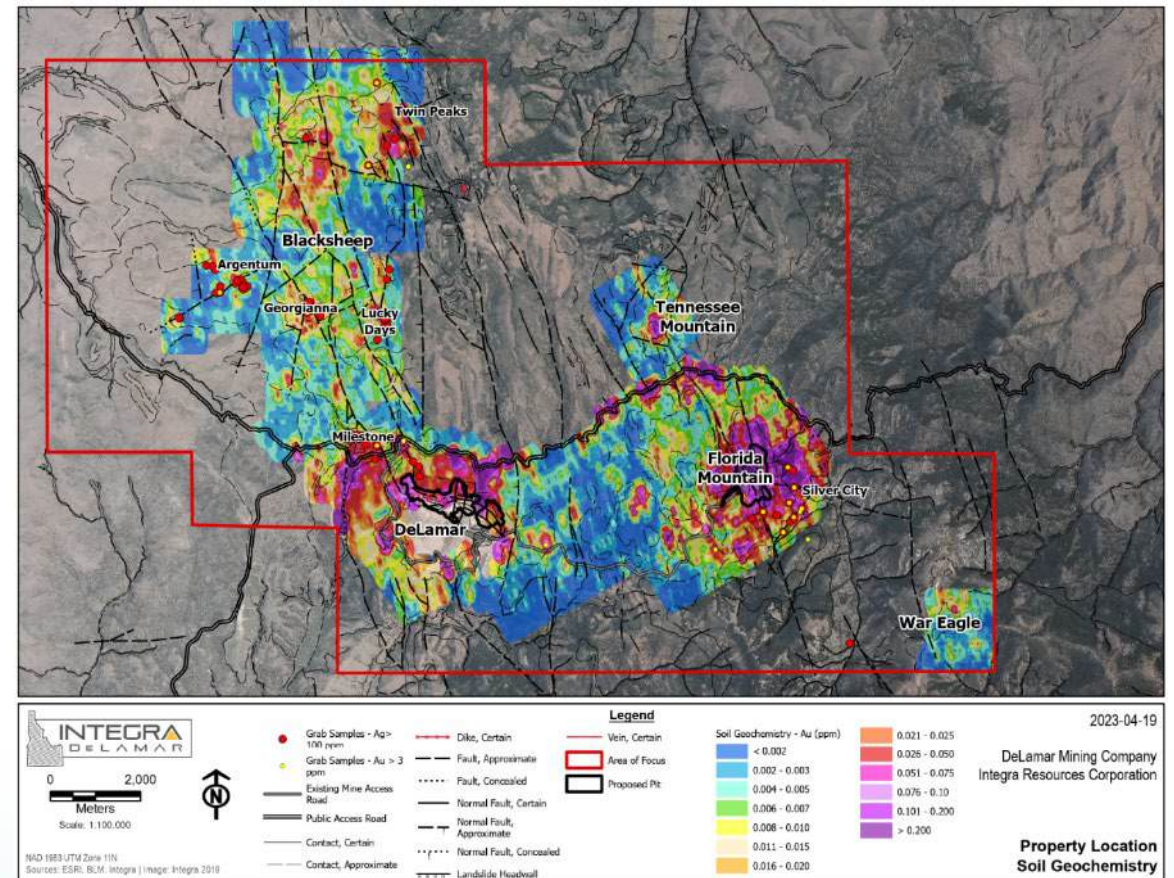
- ~25km<sup>2</sup> of exploration ground on strike to the northwest of the main DeLamar Deposit
- Past Integra work includes 4,222m of drilling over 13 holes, 50km of geophysics, and ~22km of surface mapping

## DeLamar Non-Oxide

- Significant non-oxide AuEq growth potential below the existing heap leachable resource at DeLamar
- Sullivan Gulch non-oxide drill results (IDE-22-228): **0.76 g/t Au** and **69.50 g/t Ag** (1.66 g/t AuEq) over 397m<sup>3,4</sup>

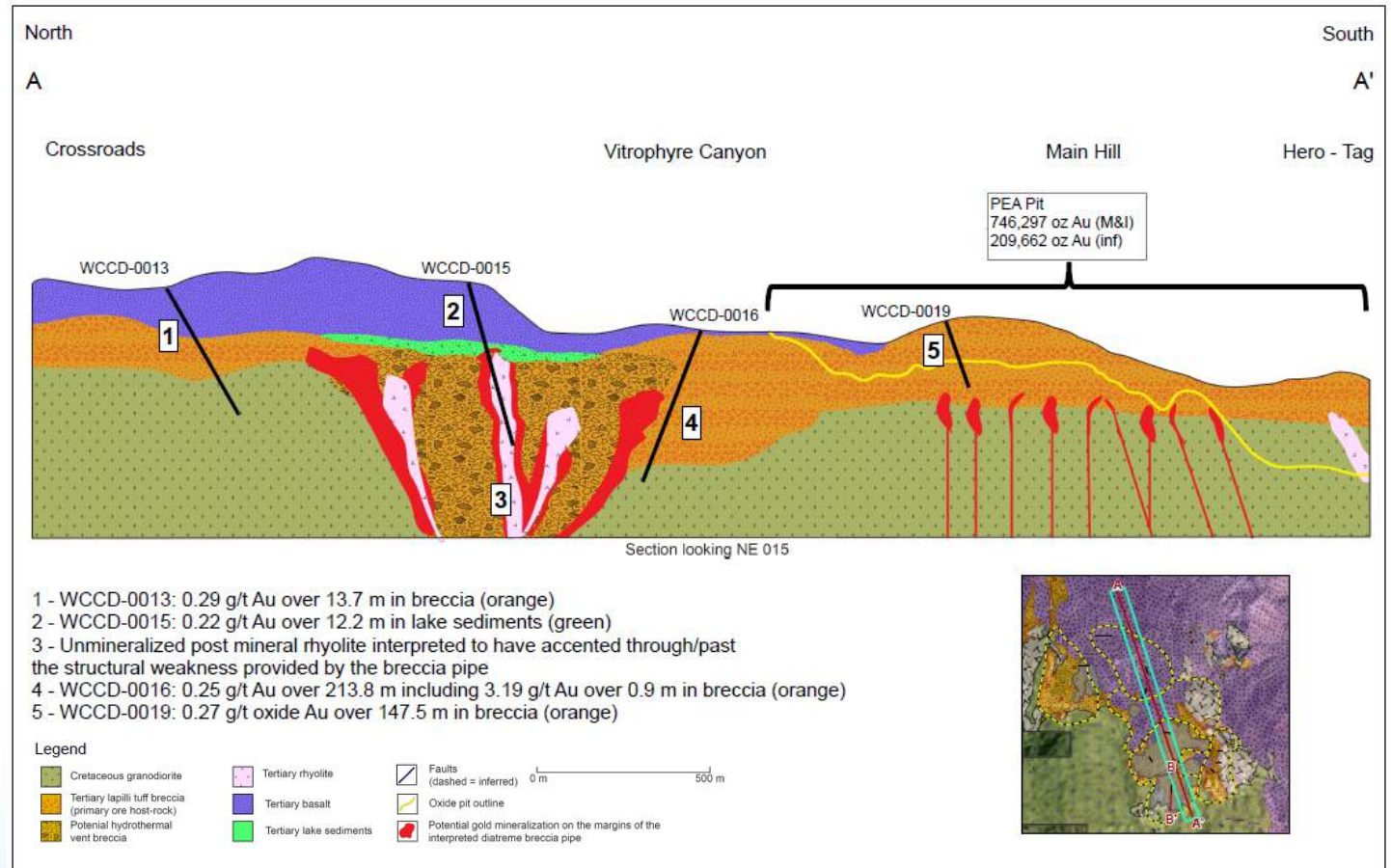
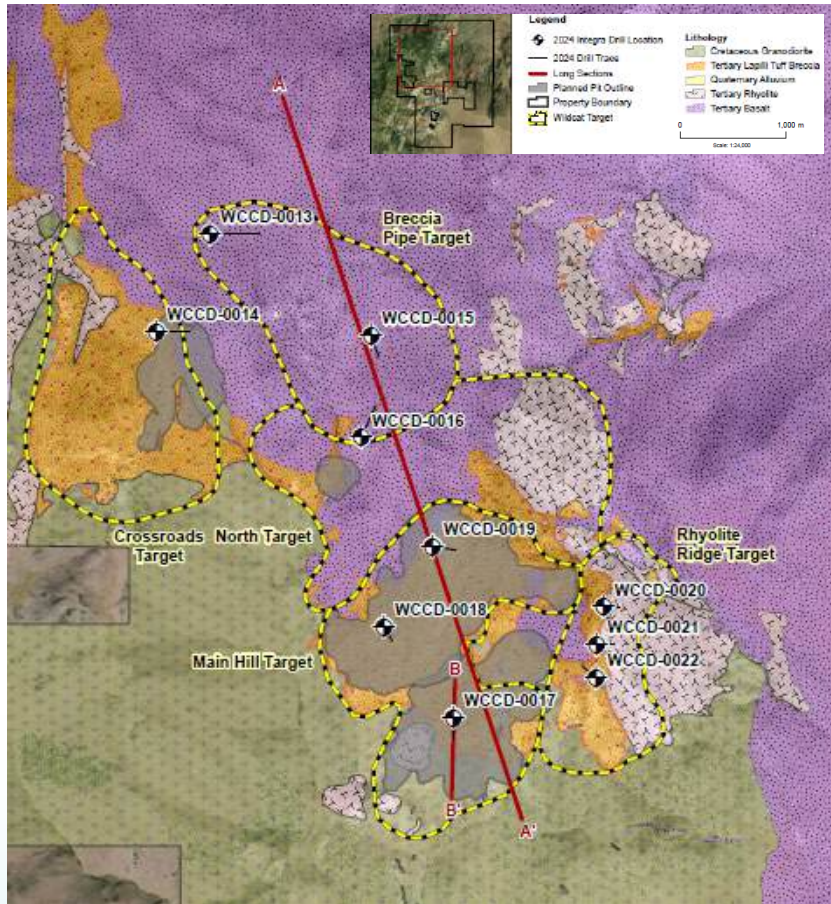
## War Eagle Target

- Located ~5km from Florida Mountain; Integra work includes 9,075m of drilling over 25 holes with detailed geophysics plan in place
- Integra drill results (IWE-19-01): **10.88 g/t Au** and **115.31 g/t Ag** (12.37 g/t AuEq) over 34m<sup>2,3</sup>



# Wildcat Heap Leach Deposit: Drilling Overview

Drilling confirmed continuity of mineralization and gathered important technical data; critical markers for working exploration hypothesis remain intact for Breccia Pipe target



The logo for Integra Resources features the word "INTEGRA" in a bold, white, sans-serif font. The letter "A" is stylized with a yellow triangle pointing upwards. Below "INTEGRA" is the word "RESOURCES" in a smaller, white, spaced-out sans-serif font. The background of the entire slide is a landscape photograph of a mining site with mountains in the distance, overlaid with a teal gradient on the right side.

# INTEGRA RESOURCES

TSX-V: ITR | NYSE: ITRG

**Corporate Office:**

400 Burrard Street, Suite 1050  
Vancouver, BC  
Canada, V6C 3A6

**For more information, please contact:**

Email: [info@integrareources.com](mailto:info@integrareources.com)  
Phone: 604-416-0576